

Full Length Research Paper

Molecular cloning and characterization of a chitinase gene up-regulated in longan buds during flowering reversion

Dongli Xie^{1,2}, Wenyu Liang^{2,3}, Xiangxi Xiao⁴, Xiao Liu², Lihan Chen² and Wei Chen^{1,2*}

¹Key Laboratory of Ministry of Education for Genetics, Breeding and Multiple Utilization of Corps, Fujian Agriculture and Forestry University, Fuzhou 350002, People's Republic of China.

²College of Life Sciences, Fujian Agriculture and Forestry University, Fuzhou 350002, People's Republic of China.

³School of Life Sciences, Ningxia University, Yinchuan 750021, People's Republic of China.

⁴Fujian Academy of Forestry Sciences, Fuzhou 350012, People's Republic of China.

Accepted 1 September, 2011

A cDNA-amplified fragment length polymorphism (cDNA-AFLP) technique was used for differential screening of genes expressed in longan (*Dimocarpus longan* Lour.) flower buds undergoing normal development versus flowering reversion. One cDNA fragment up-regulated during flowering reversion was further cloned by rapid amplification of cDNA ends (RACE) technology. This cDNA consists of 961 nucleotides and encodes an open reading frame (ORF) of 227-amino acid residues. The nucleotides and deduced amino acid sequence were both identical against published chitinases from other species and hence this cDNA was designated as DLchi (GenBank accession No. GU177464). It has a signal peptide and glycoside hydrolase's domain. The estimated molecular weight was 24.77 kD and the isoelectric point was 5.17. This protein might be grouped as a new member of class II chitinase based on the sequences available and hypothesis discussed. DLchi might be involved in the flower bud abscission observed in longan flowering reversion.

Key words: Longan, flowering reversion, chitinase gene, cloning, sequence analysis.

INTRODUCTION

Longan (*Dimocarpus longan* Lour.), a tree with edible fruit, is distributed widely in tropical and subtropical regions. When longan flowering reversion occurs, flower buds cease normal development and instead form floral spikes with leaves. The floral spikes gradually shed, which result in decrease in longan fruit productivity (Chen et al., 2009).

Recently, some researchers have shown that chitinase may be involved in abscission of leaves, buds, floral

organs, etc (Patterson, 2001). For example, Campillo and Lewis (1992) reported that basic chitinases accumulated to high levels in abscission zones and they serologically identified a related 33 kD protein in bean anthers and pistils during flower abscission. Coupe et al. (1997) screened two chitinases, Chia1 and Chia4, which were up-regulated in the leaflet abscission zone of *Sambucus nigra*. Four different chitinase transcripts were also identified during abscission of citrus leaves and apple fruits (Agusti et al., 2008; Zhou et al., 2008). Two chitinase genes were up-regulated in the abscission zone at 2 h after flower removal and remained highly expressed during 14 h, while in the non-abscission zone, their observed increase of expression was only transient and peaked at 2 h after flower removal and the class II chitinase was suggested as abscission zone specific gene (Meir et al., 2010). In addition, a wound-inducible class I acidic chitinase gene, win6, was reported in young undamaged poplar leaves, while a sharp increase,

*Corresponding author. E-mail: weichen909@hotmail.com. Tel: +86-0591-83718915. Fax: +86-0591-83847208.

Abbreviation: cDNA-AFLP, cDNA-amplified fragment length polymorphism; RT-PCR, reverse transcriptase PCR; RACE, rapid amplification of cDNA ends; EDTA, ethylenediaminetetraacetic acid; DEPC, diethyl pyrocarbonate; ORF, open reading frame.

predominantly in pollen, coincided with anther dehiscence in flowers (Clarke et al., 1994). An unexpected abundance (23%) of chitinase genes was found in the libraries of senescing petals of wallflower (*Erysimum linifolium*) (Price et al., 2008). Evidently, abscission involves the dissolving of cell walls or cell separation, so that dehiscence and senescence are similar processes involving cell wall disruption through the action of chitinases (Roberts et al., 2002; Lewis et al., 2006).

We identified a chitinase fragment that is up-regulated during flowering reversion of longan buds with cDNA-AFLP technique. Semi-quantitative reverse transcriptase PCR (RT-PCR) was used for further validation of these results. We proposed that this chitinase may be involved in longan flower bud abscission. To study its function in detail, we cloned the complete DLchi cDNA sequence from the screened gene using the rapid amplification of cDNA ends (RACE) method and characterized the sequence by a bioinformatics program.

MATERIALS AND METHODS

A 'Longyou' cultivar of longan (*D. longan* Lour.) growing in the orchard of the Putian Research Institute of Agricultural Sciences, Fujian Province, China was used in this study. Samples of both normal and reversion flowering buds were collected every week from March 01 to April 05, 2008. Most of the buds were immediately immersed in liquid N₂ and then stored at -80°C for later analysis.

Total RNA extraction from flower buds

1 g sample of longan flower bud tissue was ground into a fine powder in a pre-cooled pestle and mortar under liquid N₂. The powder was transferred into a centrifuge tube containing pre-heated (65°C) TB buffer (150 mM Tris Base), 575 mM H₃BO₃, 50 mM ethylenediaminetetraacetic acid (EDTA) (pH 8.0), 0.5 M NaCl, 4% SDS, β-mercaptoethanol, 100% ethanol and potassium acetate (KAc) (5 M, pH 4.8) and mixed on a vortex mixer. An equal volume of chloroform : isoamyl alcohol (24:1) mixture was then added to extract the RNA. This procedure was repeated three times. The upper aqueous phases were pooled and then successively precipitated with 400 μl 9 M LiCl and 1 ml 100% ethanol at -20°C. After centrifuging, the precipitate was washed twice with 70% ethanol and dried at room temperature. The total RNA was re-suspended in diethyl pyrocarbonate (DEPC)-treated water and stored at -80°C. The RNA purity and integrity were checked by ensuring that absorbance ratios (A₂₆₀/A₂₈₀) were between 1.8 and 2.0 and by agarose gel electrophoresis (1%).

cDNA-AFLP analysis

cDNA-AFLP was performed with normal and reversion flowering buds as described by Bachem et al. (1998). The double-stranded cDNA was synthesized using the SMARTTM PCR cDNA Synthesis Kit (Clontech, USA). A 200 ng sample of each ds-cDNA was digested with *EcoRI* and *MseI* enzymes and ligated to corresponding adapters. The sequences of the adapter were as follows: *EcoRI* up-stream adapter: 5'-CTCGTAGACTGCGTACC-3', *EcoRI* down-stream adapter: 5'-AATTGGTACGCAGTCTAC-3'; *MseI* upstream adapter: 5'-GACGATGAGTCCTGAG-3', *MseI* down-

stream adapter: 5'-TACTCAGGACTCAT-3'. Pre-amplification and selective amplification were performed according to the protocol provided with the AFLP Kit (Dingguo, China). The primer sequences for pre-amplification were as follows: up-stream primer: 5'-GACTGCGTACCAATTCA-3'; downstream primer: 5'-GATGAGT CCTGAGTAAC-3', selective primers: up-stream: 5'-GACTGCGTACCAATTCAAC-3'; down-stream: 5'-GATGAGTCTGAGTAACAG-3'. PCR products were identified on a 6% polyacrylamide gel run at 70 W run until the bromophenol blue reached the bottom of the gel. Bands were then displayed by silver staining.

Cloning and sequence analysis of full-length DLchi cDNA

The target DNA fragment separated into polymorphic bands was cut and re-amplified with the same primer combinations as those used for selective amplification. After checking the amplified DNAs by 1.2% (w/v) agarose gel electrophoresis, these were cloned into a pMD18-T vector (Takara, China) and sequenced using the universal M13 and RvM-14 primers.

The flanking 5' and 3'-regions were obtained using the rapid amplifications of cDNA ends (SMARTTM RACE cDNA Amplification Kit, Clontech). A pair of gene-specific primers was designed based on the sequence of the fragment screened by cDNA-AFLP. The forward primer was 5'-CTATTCGGAAGATCAATGGTGCTG-3' and the reverse primer was 5'-GAACCACAAGGCCGTCTTGAAGGCGATGG-3'. The open reading frame (ORF) was detected by DNASTAR software. A similar sequence to the cDNA and its putative amino acid sequence were verified by database searching at the National Center for Biotechnology Information server using the BLAST algorithm. Multiple alignments and a phylogenetic tree were constructed using DNAMAN 2.0 software. Amino acid sequence analysis was conducted with tools available at the Expert Protein Analysis System (ExpASY).

Semi-quantitative RT-PCR analysis

2 μg sample of total RNA was used for RT-PCR with the ReverAidTM First Strand cDNA Synthesis Kit (Fermentas, Germany), according to the manufacturer's instructions. Gene-specific primers were as follows: forward primer: 5'-ATGGCCATGTTCAACTT-3' and reverse primer: 5'-TCAACAGGACAGATTCTC-3'. DLchi was amplified by 94°C for 2 min, 30 cycles of 94°C for 30 s, 44°C for 30 s and 72°C for 1 min. The longan actin gene (accession No. EU340557) was used as internal standard to normalize the amount of templates. The forward primer was 5'-TGAGGGATGCTAAGATGG-3' and the reverse primer was 5'-ATGAGTTGCTGATGGAC-3'. All RT-PCR expression assays were performed and analyzed at least three times in independent experiments. Analysis of expression in the gel bands was performed using the Band leader software.

RESULTS

Isolation and molecular characterization of the DLchi gene

The cDNAs that were differentially expressed in normal and reversing flower buds were identified with cDNA-AFLP. One chitinase cDNA fragment was found and its up-regulation during flowering reversion was confirmed by RT-PCR (Figure 1). The full-length cDNA was completed by assembling the known partial fragment, 3' and 5' end sequences and was submitted to GenBank

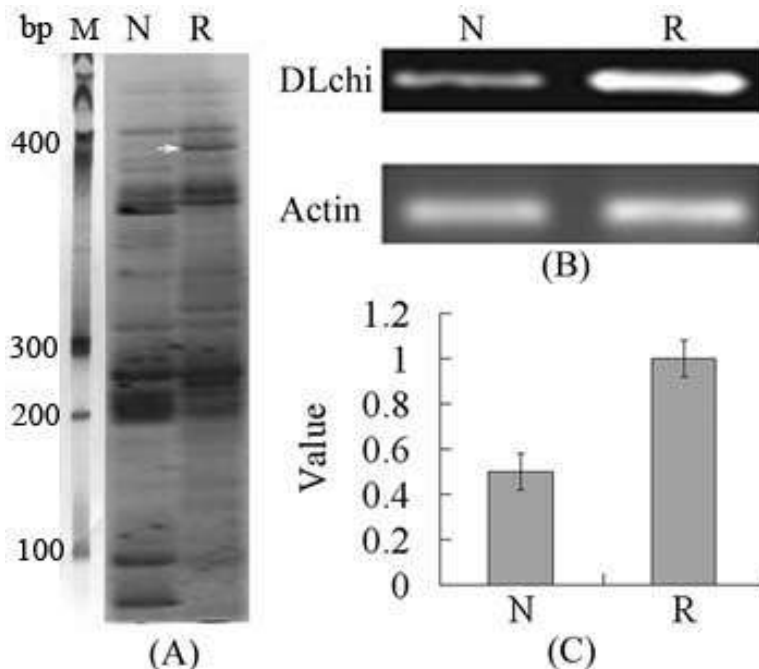


Figure 1. Isolation of a differentially expressed fragment of DLchi from reversion flower buds. A, Detection of DLchi expression using cDNA-AFLP technique from corresponding buds; M, 100 bp marker; N, normal flower buds; R, reversion flower buds. The arrow indicates the band corresponding to DLchi; B, semi-quantitative RT-PCR products were analyzed by agarose gel electrophoresis; C, relative expression profile of DLchi by Band leader software analysis. Actin was used as a standard.

(accession No. GU177464).

Comparison of the sequence with NCBI nucleotide (nt) databases revealed a close identity with the complete mRNA of several chitinases. Hence, this clone was named DLchi (*D. longan* chitinase). The known partial fragment covers 381 nt from position 367 to 626 in the full length, while the upstream 367 nt were the result of 5' RACE and the downstream 626 nt were the result of 3' RACE. The complete nucleotide sequence covers 961 bp with an open reading frame (ORF) of 684 bp, capable of encoding 227-amino-acid residues. An ATG initiation codon was found in 59 nt (5'-UTR) downstream of the 5'-start and a TGA stop codon is present in 219 nt (3'-UTR) upstream of the 3'-end. The 3'-UTR contain one AATAA motif, representing putative polyadenylation signals and 21bp polyadenylation (Figure 2). The first Met is probably the real translation initiation site since it is embedded within a sequence that conforms to the consensus for the optimal context of eukaryotic translation initiation, as defined by the motif GCC (G or A) CCAUGG (Kozak, 1991). The two most important positions in this motif- the purine at position -3 and the last G at position +4- were conserved.

The DLchi protein had a calculated molecular mass of 24.77 kD and isoelectric point (pI) of 5.17. The protein is hydrophilic with a grand average hydropathicity (GRAVY)

value of -0.127. The N-terminal 25 amino acids exhibited the characteristics of a signal peptide with a highly hydrophobic core and the characteristic amino acid composition near the cleavage site (Von Heijne, 1983), with the most likely cleavage site been between S₂₅ and Q₂₆. This protein showed no transmembrane signal in TMHMM analysis suggesting that it is secreted into the cytoplasm. Pfam analysis revealed that the DLchi protein has the catalytic domain of the family 19 chitinases, placing it as a member of the family 19 glycosyl hydrolases. Two chitinase family 19 signatures were found at Cys₄₈ to Gly₇₀ (CAGKSFYTRDGFLSAANSYAEFG) and I₁₆₁ to M₁₇₁ (IAFKTALWFWM). A conserved motif (NYNYG), essential to hydrolytic activity (Verburg et al., 1993), was found in the catalytic domain at position Asn₁₃₄ to Gly₁₃₈. Scanning the PROSITE database also revealed a potential N-linked glycosylation site (NLSC) at the C terminal region (Asn₂₂₄ to Cys₂₂₇), and one possible protein kinase C phosphorylation site [Ser₇₇ to Arg₇₉ (SKR)], four possible casein kinase II phosphorylation sites [Ser₆₅ to Glu₆₈ (SYAE), Ser₇₃ to Asp₇₆ (SADD), Ser₇₇ to Glu₈₀ (SKRE), Ser₂₂₀ to Glu₂₂₃ (SPGE)], four possible N-myristoylation sites [Gly₇₀ to Asp₇₅ (GSGSAD), Gly₁₄₁ to Phe₁₄₆ (GQAIGF), Gly₁₉₁ to Gly₁₉₆ (GAVECG), Gly₂₁₈ to Glu₂₂₃(GVSPGE)], and one possible ATP/GTP-binding

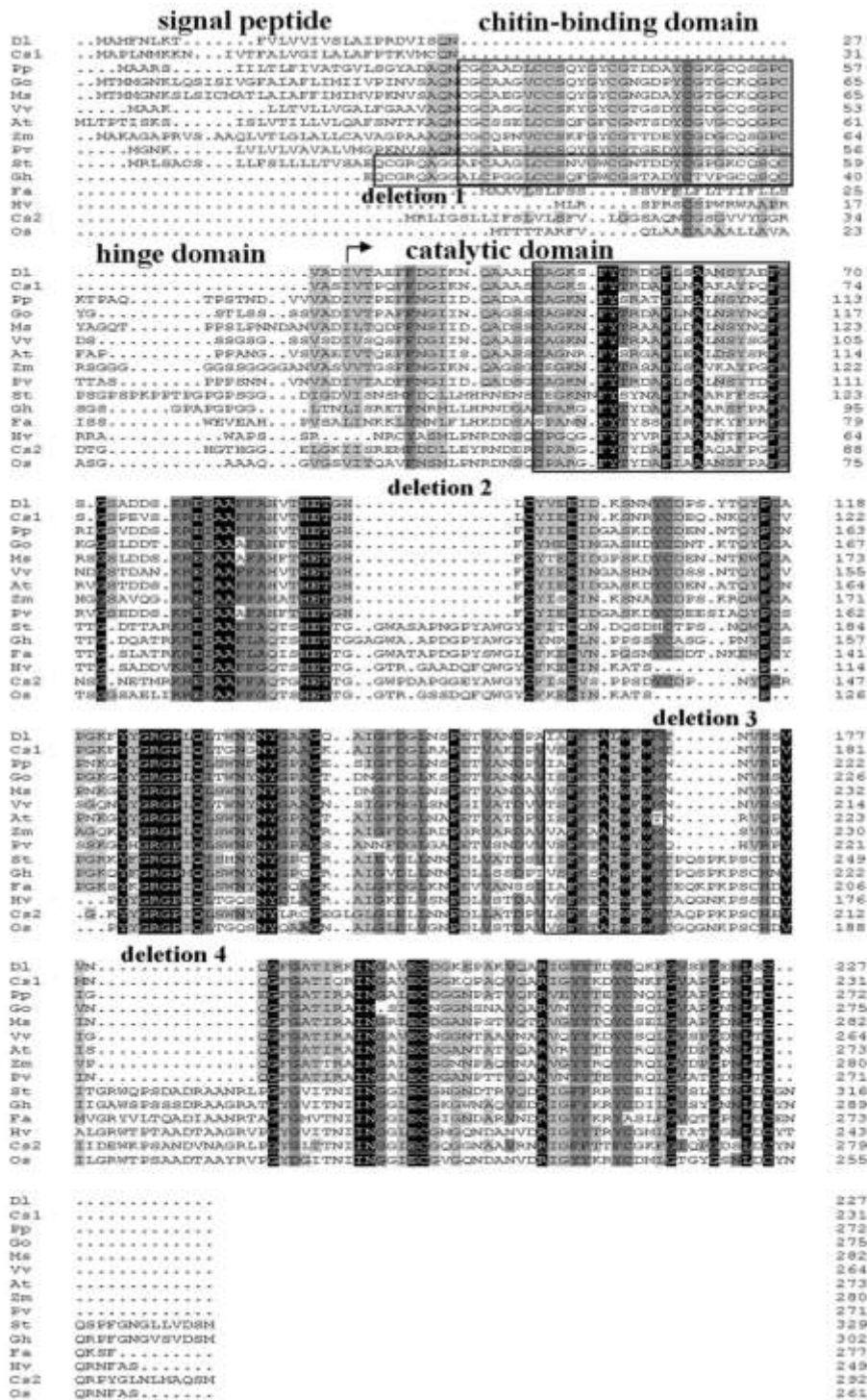


Figure 3. Alignment of amino acid sequences of DLChi with representatives of plant chitinases of class I, II and IV. Class I: St, *S. tuberosum* (AF153195.1), Gh, *G. hirsutum* (AF034566.1); Class II: Cs1, *C. sinensis* 1 (AF090336.1), Fa, *F. ananassa* (EF593027.1), Hv, *H. vulgare* (AJ276226.1), Cs2, *C. sinensis* 2 (Z70032.1), Os, *O. sativa* (L40336.1); Class IV: Pp, *P. pyrifolia* (FJ589786.1), Go, *G. orientalis* (AY253984.1), Ms, *M. sativa* (FJ487629.1), Vv, *V. vinifera* (U97521.1), At, *A. thaliana* (Y14590.1), Zm, *Z. mays* (EU724261.1), Pv, *P. vulgaris* (X57187.1). The structural domain differences are indicated. The first box represents the chitin-binding domain (cysteine-rich domain); the second box is a typical Chitinase family 19 signature 1, (C-x (4,5)-F-Y-[ST]-x (3)-[FY]-[LIVMF]-x-A-x (3)-[YF]-x (2)-F-[GSA]); the third box represents a chitinase family 19 signature 2, ([LIVM]-[GSA]-F-x-[STAG] (2)-[LIVMFY]-W-[FY]-W-[LIVM]).

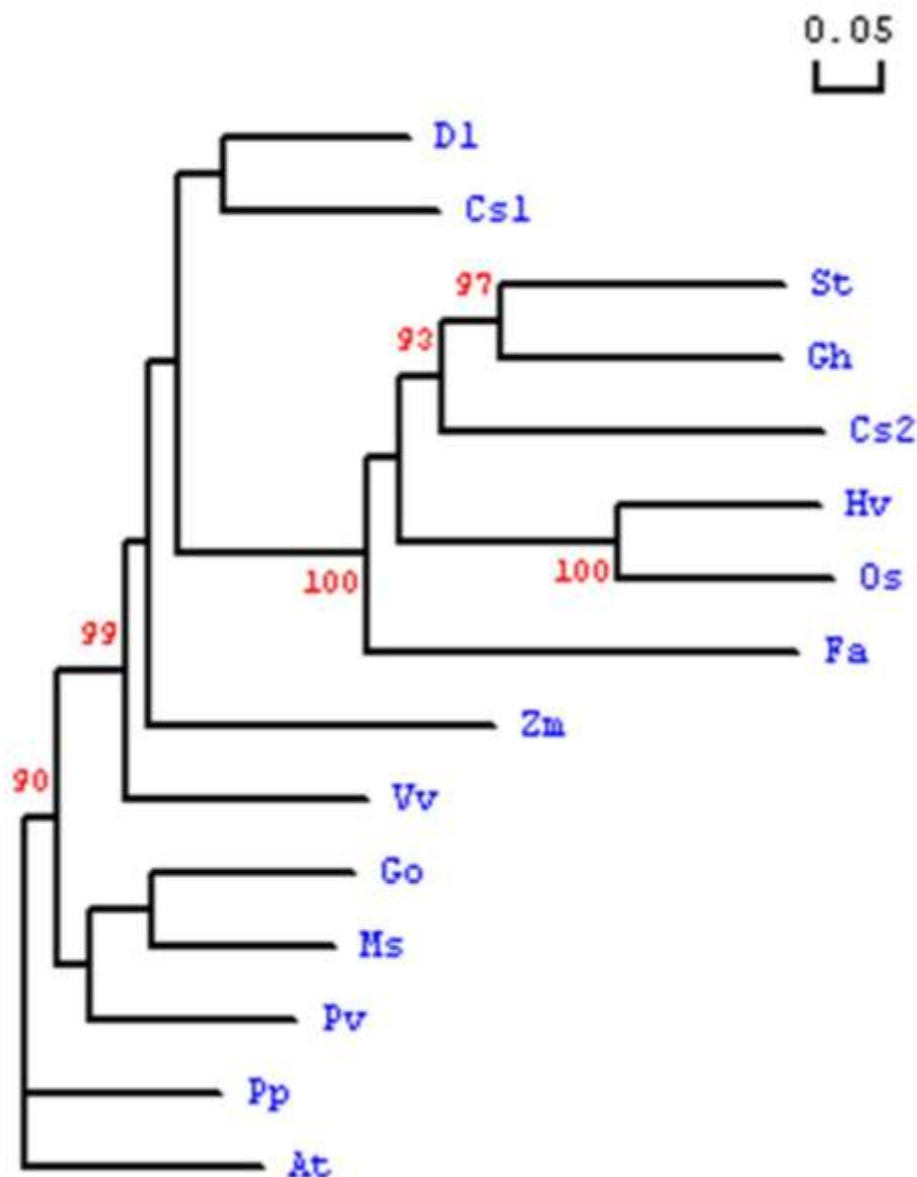


Figure 4. Phylogenetic tree of amino acid sequences of DLchi and chitinases from other species. The numbers on the branches represented bootstrap support for 1000 replicates; the phylogenetic tree was computed using standard parameters.

for further comparison, but we found lower identities with DLchi in class II chitinases from *Fragaria ananassa* (40%), *Hordeum vulgare* (39%), *Citrus sinensis* 2 (38%), and *Oryza sativa* (36%). Three deletions in catalytic domain were in accordance with the difference between class I and class IV chitinases. Two class I chitinases, from *Solanum tuberosum* (37%) and *Gossypium hirsutum* (38%), were also examined. Phylogenetic analysis (Figure 4) showed that chitinase from longan was most closely clustered with one class II (*C. sinensis* 1) chitinase. They formed the first clade, with another cluster including *S. tuberosum*, *G. hirsutum*, *F. ananassa*, *H. vulgare*, *C. sinensis*, *O. sativa*. DLchi was distantly

related to class IV chitinases from *P. pyrifolia*, *G. orientalis*, *M. sativa*, *A. thaliana*, *P. vulgaris*, *V. vinifera*, and *Z. mays*. This suggests that DLchi might be closer to class II chitinases from the viewpoint of evolution.

DISCUSSION

We performed cDNA-AFLP to identify genes that were differentially expressed during flowering reversion. The results show that three potential genes were involved in flower reversion, namely, NIMA related protein kinases (Nek1), endo-1,4-beta-D-glucanase precursor and

chitinase (data not shown). Nek1 mRNA is thought to be involved in cell cycle with an accumulation of Nek1 mRNA at the G1/S transition and throughout the G2-to-M progression (Cloutier et al., 2005). Nek1 down-expression in flower reversion may interfere with normal mitosis in flower buds. There is also no doubt that endo-1,4-beta-D-glucanase up-regulated expression plays an important role in cell wall separation in plant development (Xie et al., 2011). However, chitinase is usually suggested to be pathogenesis-related protein and exert more anti-fungal activity (Iqbal et al., 2011). The underlying role in plant development is not very clear. Therefore, we paid more attention on chitinase in this study.

The expression of the DLchi cDNA fragment was up-regulated in reversion buds. Analysis of amino acid sequences indicated similarity with class I, II, IV chitinases of other plant species. However, DLchi shared higher identities with class IV, at 63 to 76% similarity, than it did with class I, at 37 to 38%, or class II, at 36 to 40% (except for *C. sinensis* 1, which had a 76% similarity). Although class I, II and IV chitinases are all members of the family 19 glycosyl hydrolases and the sequences in the catalytic regions are highly conserved, they differ in their structural elements. Class I chitinases consist of a chitin-binding domain (CBD) and a catalytic domain (Cat), linked by a variable hinge domain (VHD); class II chitinases are structurally homologous to Cat domain of class I, but lack CBD; class IV chitinases show sequence similarity to class I, but they are smaller due to four deletions (Collinge et al., 1993). When compared with class I, II, and IV enzymes in terms of sequence, DLchi also has more similarity with class IV in structure, exhibiting three deletions in the Cat domain. However, some researchers believe that acid class II chitinase and class IV chitinase genes might have both evolved from class I chitinase genes (Wiweger et al., 2003). This model was also consistent with our phylogenetic tree results. Taken together, we suggest that DLchi encodes a class II chitinase with the following features: (1) lack of an N-terminal cysteine-rich CBD and VHD, (2) an acidic isoelectric point and (3) a closer cluster to class II chitinase. The class II chitinase seems to be more basically associated with plant development and morphogenesis, especially in flower formation and leaf abscission (Delos Reyes et al., 2001; Meir et al., 2010).

Proscan analysis predicted that DLchi would possess many post-translational modification sites, including an N-linked glycosylation site, a protein kinase C phosphorylation site, a casein kinase II phosphorylation site, N-myristoylation sites, and an ATP/GTP-binding site motif A (P-loop). Although, the significance and exact mechanism of these motifs are not yet clear, they might be involved in signal transduction. As one strong candidate substrate for chitinase, plant arabinogalactan proteins (AGPs) (Showalter, 2001) could be hydrolyzed to generate an oligosaccharide fragment signal molecule that could regulate plant growth and development (Pilling and Höfte, 2003). Chitinase-treated AGPs were able to

rescue the temperature-sensitive embryonic development in the carrot *tsl1* mutant cell line (Van Hengel et al., 2001). Kim et al (2000) isolated a chitinase-related receptor-like kinase in tobacco and suggested that it might transduce a signal by binding oligosaccharides. These reports raise the possibility that chitinase may influence some physiological process in abscission process by some types of signal transduction mechanism (Stenvik, 2006). The oligosaccharide would then be ligated to a receptor for further transduction of the signal for special physiological process, but its detailed mechanism still needs further investigation. We anticipate further plant transformation in the model *Arabidopsis* in the coming years based on our analysis.

ACKNOWLEDGEMENTS

This work was supported by the National Natural Science Grant of China (Award no. 30571293) and the Ph.D. Programs Foundation of the Ministry of Education of China (Award no. 200803890009).

REFERENCES

- Agustí J, Merelo P, Cercós M, Tadeo FR, Talón M (2008). Ethylene-induced differential gene expression during abscission of citrus leaves. *J. Exp. Bot.* 59(10): 2717-2733.
- Bachem CWB, Oomen RJF, Visser RGF (1998). [Transcript imaging with cDNA-AFLP: A step by step protocol. Plant Mol. Biol. Rep. 16\(2\): 157-173.](#)
- Campillo E, Lewis LN (1992). Occurrence of 9.5 cellulase and other hydrolases in flower reproductive organs undergoing major cell wall disruption. *Plant Physiol.* 99(3): 1015-1020.
- Campillo E, Lewis LN (1992). Occurrence of 9.5 cellulase and other hydrolases in flower reproductive organs undergoing major cell wall disruption. *Plant Physiol.* 99(3): 1015-1020.
- Clarke HRGM, Davis JM, Wilbert SM, Bradshaw Jrhd, Gordon MP (1994). [Wound induced and developmental activation of a poplar tree chitinase gene promoter in transgenic tobacco. Plant Mol. Biol. 25\(5\): 799-815.](#)
- Cloutier M, Vigneault F, Lachance D, Séguin A (2005). Characterization of a poplar NIMA-related kinase P_{Nek1} and its potential role in meristematic activity. *FEBS Lett.* 579(21): 4659-4665.
- Collinge DB, Kragh KM, Mikkelsen JD, Nielsen KK, Rasmussen U, Vad K (1993). [Plant chitinases. Plant J. 3\(1\): 31-40.](#)
- Coupe SA, Taylor JE, Roberts JA (1997). [Temporal and spatial expression of mRNAs encoding pathogenesis-related proteins during ethylene-promoted leaflet abscission in *Sambucus nigra*. Plant Cell. Environ. 20\(12\): 1517-1524.](#)
- Delos Reyes BG, Taliaferro CM, Anderson MP, Melcher U, McMaugh S (2001). Induced expression of the class II chitinase gene during cold acclimation and dehydration of bermudagrass (*Cynodon* sp.). *Theor. Appl. Genet.* 103(2): 297-306.
- Iqbal MM, Zafar Y, Nazir F, Ali S, Iqbal J, Asif MA, Omer Rashid O, Ali GM (2011). Over expression of bacterial chitinase gene in Pakistani peanut (*Arachis hypogaea* L.) cultivar GOLDEN. *Afr. J. Biotechnol.* 10(31): 5838-5844.
- Kim YS, Lee JH, Yoon GM, Cho HS, Park SW, Suh MC, Choi D, Ha HJ, Liu JR, Pai HS (2000). [CHRK1, a chitinase-related receptor-like kinase in tobacco. Plant Physiol. 123\(3\): 905-915.](#)
- Kozak M (1991). Structural features in eukaryotic mRNAs that modulate the initiation of translation. *J. Biol. Chem.* 266(30): 19867-19870.
- Lewis MW, Leslie ME, Liljegren SJ (2006). [Plant separation: 50 ways to leave your mother. Curr. Opin. Plant Biol. 9\(1\): 59-65.](#)
- Meir S, Philosoph-Hadas S, Sundaresan S, Vijay-Selvaraj KS, Burd S,

- [Ophir R, Kochanek B, Reid MS, Jiang CZ, Lers A \(2010\). Microarray analysis of the abscission-related transcriptome in the tomato flower abscission zone in response to auxin depletion. *Plant Physiol.* 154\(4\): 1929-1956.](#)
- [Patterson SE \(2001\). Cutting Loose. *Abscission and Dehiscence in Arabidopsis.* *Plant Physiol.* 126\(2\): 494-500.](#)
- [Pilling E, Höfte H \(2003\). Feedback from the wall. *Curr. Opin. Plant Biol.* 6\(6\): 611-616.](#)
- [Price AM, Orellana DFA, Salleh FM, Stevens R, Acock R, Buchanan-Wollaston V, Stead AD, Rogers HJ \(2008\). A comparison of leaf and petal senescence in wall flower reveals common and distinct patterns of gene expression and physiology. *Plant Physiol.* 147\(4\): 1898-1912.](#)
- [Roberts JA, Elliott KA, Gonzales-Carranza ZH \(2002\). Abscission, dehiscence, and other cell separation processes. *Ann. Rev. Plant Biol.* 53: 131-158.](#)
- [Showalter AM \(2001\). Arabinogalactan-proteins: structure, expression and function. *Cell Mol. Life Sci.* 58\(10\): 1399-1417.](#)
- [Stenvik GE, Butenko MA, Urbanowicz BR, Rose JKC, Aalen RB \(2006\). Overexpression of inflorescence deficient in abscission activates cell separation in vestigial abscission zones in *arabidopsis*. *Plant Cell.* 18\(6\): 1467-1476.](#)
- [Van Hengel AJ, Tadesse Z, Immerzeel P, Schols H, Van Kammen A, De Vries SC \(2001\). N-acetylglucosamine and glucosamine containing arabinogalactan proteins control somatic embryogenesis. *Plant Physiol.* 125\(4\): 1880-1890.](#)
- [Verburg JG, Rangwala SH, Samac DA, Luckow VA, Huynh QK \(1993\). Examination of the role of tyrosine-174 in the catalytic mechanism of the *Arabidopsis thaliana* chitinase: Comparison of variant chitinases generated by site directed mutagenesis and expressed in insect cells using baculovirus vectors. *Arch. Biochem. Biophys.* 300\(1\): 223-230.](#)
- [Von Heijne G \(1983\). Pattern of amino acids near signal sequence cleavage sites. *Eur. J. Biochem.* 133\(1\): 17-21.](#)
- [Wiweger M, Farbos I, Ingouff M, Lagercrantz U, Von Arnold S \(2003\). Expression of *Chia4-Pa* chitinase genes during somatic and zygotic embryo development in Norway spruce \(*Picea abies*\): similarities and differences between gymnosperm and angiosperm class IV chitinases. *J. Exp. Bot.* 54\(393\): 2691-2699.](#)
- [Xie XJ, Huang JJ, Gao HH, Guo GQ \(2011\). Expression patterns of two *Arabidopsis* endo- \$\beta\$ -1, 4-glucanase genes \(At3g43860, At4g39000\) in reproductive development. *Mol. Biol.* 45\(3\): 458-465.](#)
- [Zhou CJ, Lakso AN, Robinson TL, Gan SS \(2008\). Isolation and characterization of genes associated with shade induced apple abscission. *Mol. Gene. Geno.* 280\(1\): 83-92.](#)