

Full Length Research Paper

Borehole depth and regolith aquifer hydraulic characteristics of bedrock types in Kano area, Northern Nigeria

Bala Abdullahi Emmanuel¹, Eduvie Obada Martins², and Byami Jolly¹

¹Department of Geology, Ahmadu Bello University, Zaria, Kaduna State, Nigeria.

²National Water Resources Institute, P. M. B. 2309 Kaduna, Kaduna State, Nigeria.

Accepted 31 January, 2011

In this study, the performance of regolith aquifers derived from the different bedrock types was examined using information on depth of borehole, depth to the static water level, yield of borehole and drawdown in 259 boreholes covering the different bedrock types. Results show that mean depth of wells varies from about 37 to 48 m in rocks of the Younger Granites and in the migmatite-gneiss complex and schists, respectively. Static water level ranges from about 9 to 18 m in regolith of the Younger Granites and that of the migmatite-gneiss complex and schists, respectively. Yield varies from about 28 to 44 L/min in the migmatite-gneiss complex and schist and in the porphyritic granite, respectively. Drawdown varies from about 6 to 9 m in the regolith of the Younger Granite and in that of the migmatite-gneiss complex and schist, respectively. Mean values of specific capacity varies from about 9 to 11 m²/d while transmissivity ranges from about 16 to 20 m²/d. The least values are found with the regolith of the migmatite-gneiss complex and schists while the highest values are found in aquifers of the porphyritic granite. Results further indicate that aquifers derived from rocks of granitic composition tend to exhibit similar hydraulic characteristics. But the poor performance of regolith of the migmatite-gneiss complex and schists (Younger Metasediments) is ascribed to their texture and structure.

Key words: Kano, regolith aquifer, Younger Metasediments, groundwater, yield, transmissivity, basement complex.

INTRODUCTION

Kano area is underlain by rocks of the Nigerian Basement Complex comprising migmatite-gneiss complex, Younger Metasediments, Older and Younger Granites. The aquifers of the Basement Complex rocks are the regolith and the fractures in the fresh bedrock which are known to be interconnected at depth (Mohammed, 1984; Alagbe, 1987; Adanu, 1989; Uma and Kehinde, 1994). These previous works also suggest that the regolith aquifer is uniform in its hydraulic characteristics, properties which Uma and Kehinde (1994) highlights as more crucial than thickness or saturated thickness in determining regolith aquifer performance. In

a recent hydrogeological study carried out in parts of Kano area, Bala (2008) has shown that regolith aquifer derived from schists and gneisses of sedimentary origin (orthogneisses) proved to be a difficult groundwater terrain contrary to the observations in the earlier works that not only indicated similarity in aquifer performance across the different bedrock types, but also that these aquifers compare with those in other parts of the African Shield. Using information on depth to the water table measured in hand dug wells, Bala (2008) sets an optimum borehole depth in the regolith aquifer for the area and also reveals that the larger the depth to the water table, the smaller is the borehole yield, and the deeper is the borehole, and that both drawdown and specific capacity are weakly and negatively correlated with depth to the water table. The study also revealed that depth to the water table in hand dug wells vary independently of

*Corresponding author. E-mail: emmabala@yahoo.com. Tel: (234) 0803 665 7130.

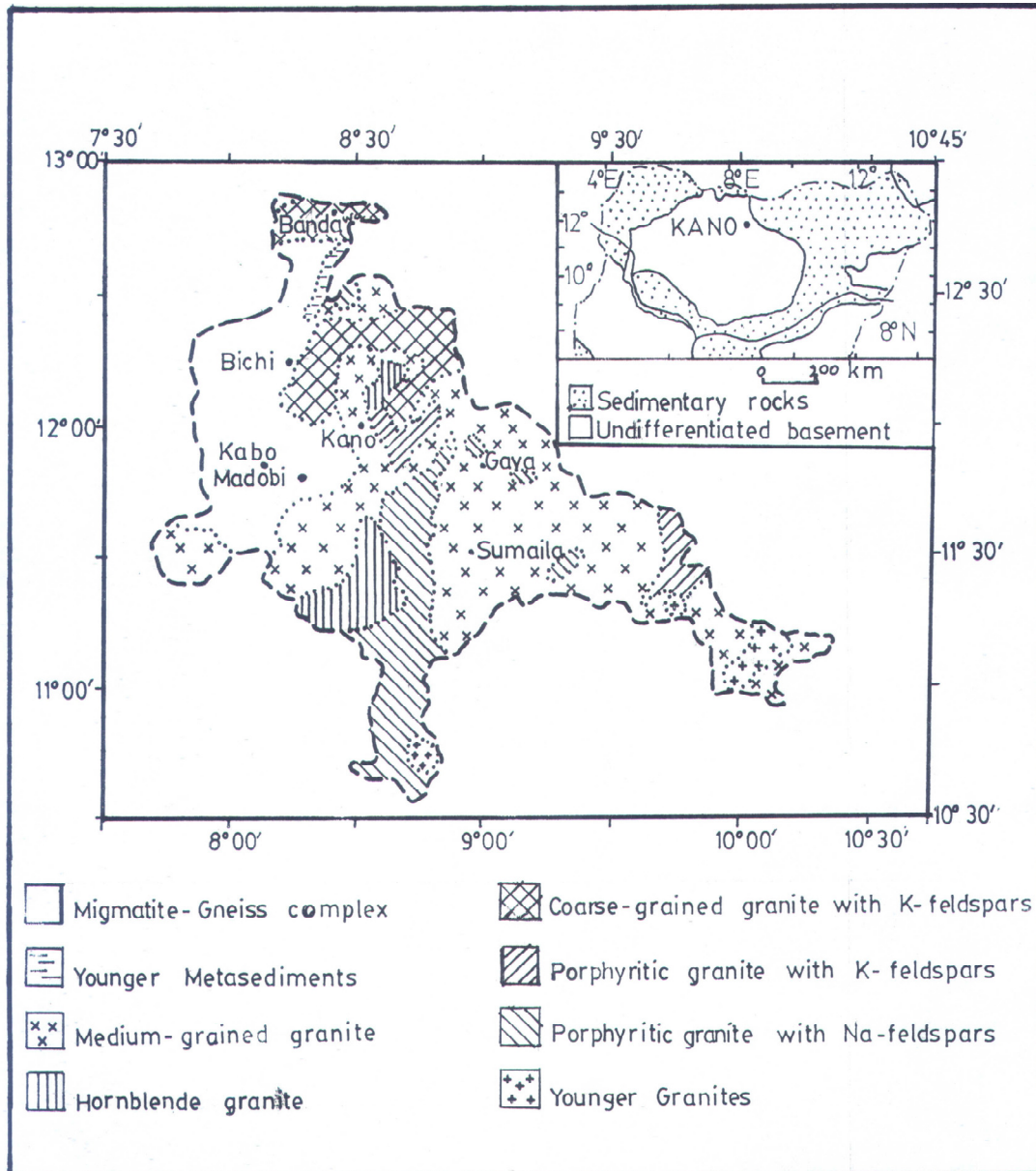


Figure 1. Location and geological map of the study area (Modified from KNARDA, 1989).

independently of rock types, but it is comparable from well to well in the same locality. It was also noted that wells located in areas underlain by schists and similar rocks were generally deep and the depth to the water table in them is larger than in those located in the other rock types.

The findings of Bala (2008) relating aquifer yield to depth to the water table and hence depth of the well is at variance with that of Uma and Kehinde (1994) that indicates a uniform yield of the regolith aquifer from all bedrock types. The aim of this paper is to examine the borehole and aquifer hydraulic characteristics of regolith derived from the different bedrock types of the crystalline basement in the study area.

LOCATION AND CLIMATE OF THE STUDY AREA

The area covered by this study is located approximately within latitudes $10^{\circ} 40' N$ to $12^{\circ} 48' N$ and longitudes $07^{\circ} 43' E$ to $10^{\circ} 20' E$ (Figure 1). The area experiences a tropical climate having a rainy and a dry season. Rainy season begins in April/May and ends in October while dry season prevails for the rest of the year. The mean annual rainfall estimated by means of simple arithmetic method for 23 stations is about 785 mm. Relative humidity at 10:00 h varies from about 20 to 70% (Federal Surveys, 1978). The least humidity value is recorded between January and February, and the highest, between July and September. Humidity at 16:00 h varies from about 20 to

60% and the highest values are recorded in July and August. Annual mean temperature ranges from about 70 to 80°F, (21 to 27°C). The lowest temperatures are recorded in the months of December and January while April and May are the hottest months. Although these weather conditions are old, there are no reliable records showing present changes being witnessed.

GEOLOGY OF THE STUDY AREA

The Northern Nigerian Basement Complex comprises three groups of rocks namely, migmatites and (high grade) gneisses derived from Birrimain sedimentary rocks through high grade metamorphism and granitization; the Younger Metasediments of Upper Proterozoic age which are low grade metamorphic rocks that were folded along with the migmatite and gneisses during the Pan-African orogeny; and the Older Granite series which were intruded during the Pan-African orogeny (McCurry, 1989). In the study area, Hazell et al. (1988) also reports the occurrence of rocks of the Younger Granites series (Falconer, 1911), so termed because they are Jurassic in age (Figure 1), as well as volcanics, and occasional younger dykes and flows. Kano Agricultural and Rural Development Authority, KNARDA (1989) identifies the individual members of the Older Granite suite, but rocks of the Younger Metasediments and those of the migmatite-gneiss complex were simply grouped as the migmatite-gneiss complex in some places (Figure 1).

GENERAL HYDROGEOLOGY OF THE STUDY AREA

Mohammed (1984) indicates that the aquifers of the Basement Complex area of Kano State are the weathered and fractured rocks in which groundwater exist under water table condition. Water table lies at a depth generally less than 20 m, and the maximum depth of boreholes rarely exceeds 60 m. The hydraulic conductivity of the aquifer ranges from 0.039 to 0.778 m/d with an average of 0.330 m/d; transmissivity varies from 3.756 to 36.600 m²/d with an average of 12.320 m²/d; and specific capacity is between 0.054 and 1.200 m³/m/d with an average of 0.360 m³/m/d. Muslim (1984) presents a composite hydrogeological section for the basement rocks having a general sequence as follows: Lateritic sand or laterite top layer, silty sand, sandy clay, clayey sand or clay, weathered rocks and fresh bedrock. The mean depth to water table was put at 8.4 m while the maximum depth is 18.5 m.

MATERIALS AND METHODS

The borehole data that were used for this work were from KNARDA(1989). The pieces of information from the data cover all the different rock types. For each borehole, information on location, borehole depth, depth to static water level, pumping rate and

drawdown (from pumping test conducted for 60 min in the pumped well) were obtained. Fractures, where ever encountered were recorded and such a borehole was deselected in this work.

In order to enable comparison of borehole and aquifer parameters, the boreholes were studied in groups based on the bedrock types. Rocks of the Older Granite suite were separated into varieties on the basis of texture into medium-grained, coarse-grained, and porphyritic granite. From the information on borehole location, 63 boreholes (covering Shanono, Bagwai, Bichi and Tsanyawa Local Government Areas, LGA) were used for the migmatite-gneiss complex (Figure 2); 71 boreholes (covering Karaye, Gaya and Sumaila LGA) were used for medium-grained granite; 47 boreholes (covering Bebeji, Kumbotso and Gezawa LGA) were used for the coarse-grained granite; 62 boreholes (covering Tudun Wada, Rano and Dawakin Kudu LGA) were used for the porphyritic granite; and 16 boreholes (covering Gwaram LGA) were used for rocks of the Younger Granite suite. For the different bedrock types, the total number of boreholes used was determined by the available data.

The specific capacity of the aquifer was calculated using information on the discharge rate and drawdown in the well. Transmissivity was determined based on Logan (1964) estimation for phreatic aquifers as

$$T = a \times (Q/s) \dots (1)$$

where T is the transmissivity of the aquifer (m²/d), a is a dimensional constant = 1.22, Q is yield of well (m³/d), and s is drawdown in the pumping well (m).

RESULTS

A summary of the results on borehole characteristics from the different bedrock types is presented in Table 1.

Mean depth of wells is highest in the migmatite-gneiss complex and schists and it is lowest in areas underlain by rocks of the Younger Granites; static water level in wells is deepest in the migmatite-gneiss complex and schists, and it is shallowest in areas underlain by rocks of the Younger Granites; yield is lowest in migmatitic-gneiss and schist, and it is highest in the porphyritic granite and; drawdown is highest in the migmatitic-gneiss complex and schist while it is lowest in the regolith of the Younger Granite. From the results on aquifer hydraulic characteristics (Table 2), mean values of both specific capacity and transmissivity are highest in the regolith aquifer of the porphyritic granite, 15.55 and 19.61 m²/d, respectively, and they are lowest for the regolith of the migmatite-gneiss complex and schist that has 8.73 and 10.65 m²/d, respectively.

DISCUSSION

Boreholes located in the area designated as migmatite-gneiss complex (Figure 1) show characteristics that differ from those located elsewhere in the study area. Field evidence (Figure 3) shows that the area designated as migmatite-gneiss complex on Figure 1 also contains rocks of the Younger Metasediments which include quartzites (sometimes ferruginous), metapellites (mainly

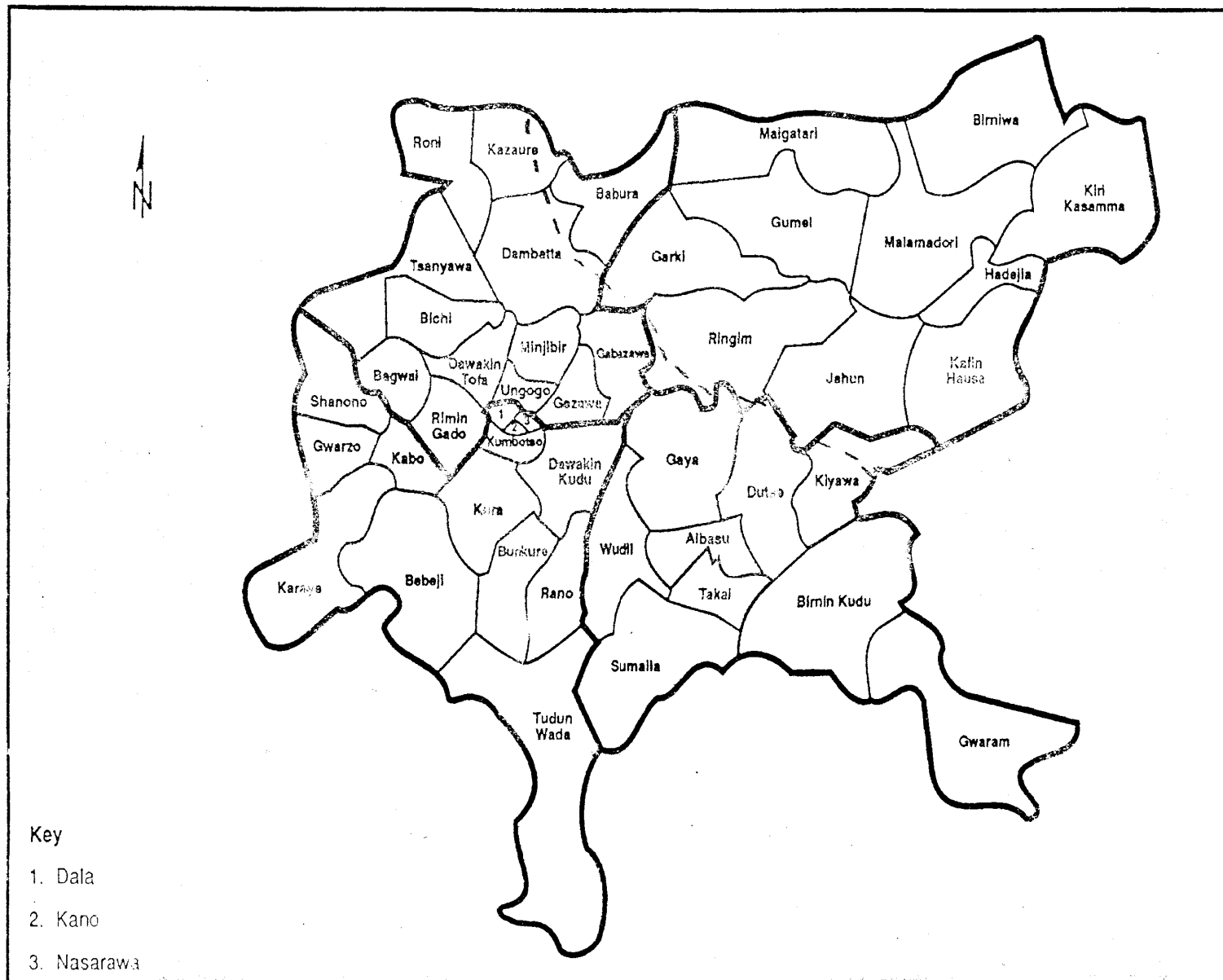


Figure 2. Location of local government areas of Kano.

Table 1. General characteristics of boreholes located on different bedrock types in the studied area.

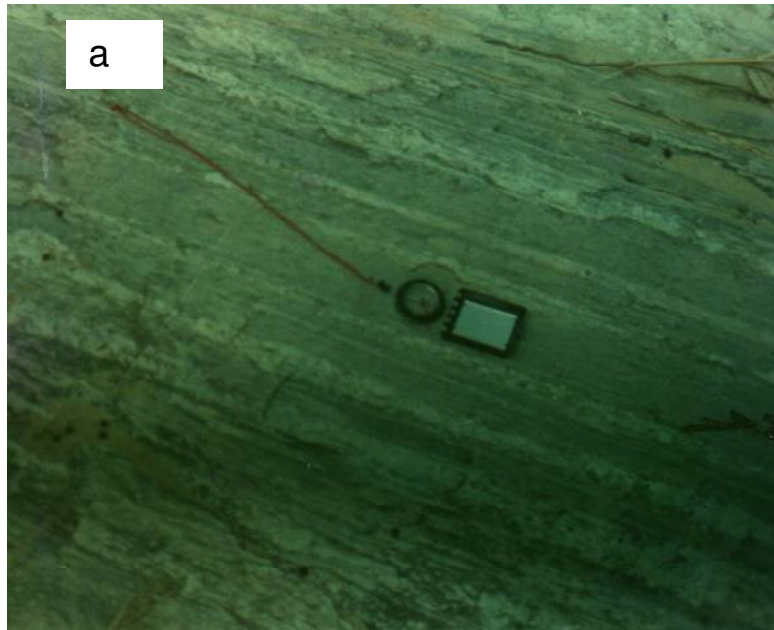
Parameter	Rock type				
	Older Granite				
	Migmatite- gneiss	Medium-graine	Coare-graine	Porphyritic	Younger Granites
Depth (m)					
Range	25.50 - 77.10	25.50 - 61.00	24.00 - 64.00	29.00 - 79.50	23.00 - 44.50
Mean	47.51	40.11	41.28	38.89	37.25
Std. Dev.	14.02	10.31	11.17	10.61	6.10
SWL (m)					
Range	2.70 – 30.76	2.70 - 28.65	4.82 – 27.72	2.10 - 27.87	4.30 – 13.60
Mean	18.48	12.79	14.13	10.96	8.76
Std. Dev.	7.17	5.74	6.16	6.31	3.72
Yield (l/min)					
Range	09.00 - 90.00	10.00 - 72.00	08.00 – 80.00	10.00 - 90.00	10.00 – 115.00
Mean	27.59	40.20	36.89	43.18	37.75
Std. Dev.	19.90	26.44	18.73	23.23.50	27.06
Drawdown (m)					
Range	1.30 – 28.34	1.66 – 32.51	0.26 – 19.85	0.79 - 25.53	1.13 – 12.91
Mean	9.35	7.80	7.55	8.71	6.44
Std. Dev.	7.13	5.23	5.25	6.50	2.54

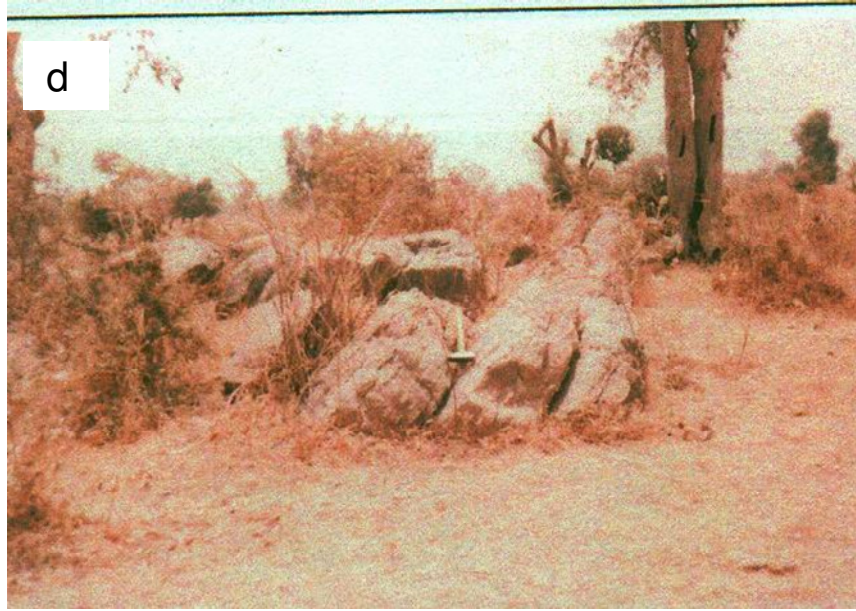
Table 2. Hydraulic characteristics of regolith aquifers located on different bedrock types in the studied area.

Parameter	Rock type				
	Older Granite				
	Migmatite- gneiss	Medium-graine	Coare-graine	Porphyritic	Younger Granites
Specific capacity (m³/m/d)					
Range	0.51- 41.23	0.53- 64.64	0.75- 56.84	0.48 -75.79	2.19 - 57.00
Mean	8.73	11.40	10.18	15.57	12.91
Std. Dev.	18.93	13.09	9.28	6.50	14.68
Transmissivity (m²/d)					
Range	0.50 – 50.30	0.65 – 78.87	0.51 – 69.34	0.57 – 222.53	2.04 – 69.96
Mean	10.65	13.90	12.42	19.61	16.74
Std. Dev.	23.10	15.97	11.32	31.56	18.43

biotite and muscovite schists), and metasandstones. Although, ferruginous quartzites are sometimes found most of the area of metasediments is occupied by biotite or muscovite schists. In that area, the dynamic water level falls quite rapidly with pumping. This situation as well as the general low yield of boreholes in this terrain is a function of the general hydraulic characteristics of this very fine-grained aquifer where rate of flow into the well is at a slower rate than in the coarse-grained aquifers derived from rocks of granitic composition. Additionally, for phreatic aquifers, flow into the well and well recovery

after pumping result from a combination of both horizontal and vertical flows (since area of influence of well increases with drawdown). Schist and similar rocks, from their original form of occurrence, may be homogeneous but they are anisotropic. Therefore, flow of water through their aquifers is slow, and specific discharge perpendicular to layering is smaller than that parallel to it because k_z is different from k_x and k_y which are also quite small because aquifer material is fine-grained. The effect of both structure and texture of this bedrock type is responsible for the low performance of regolith aquifer





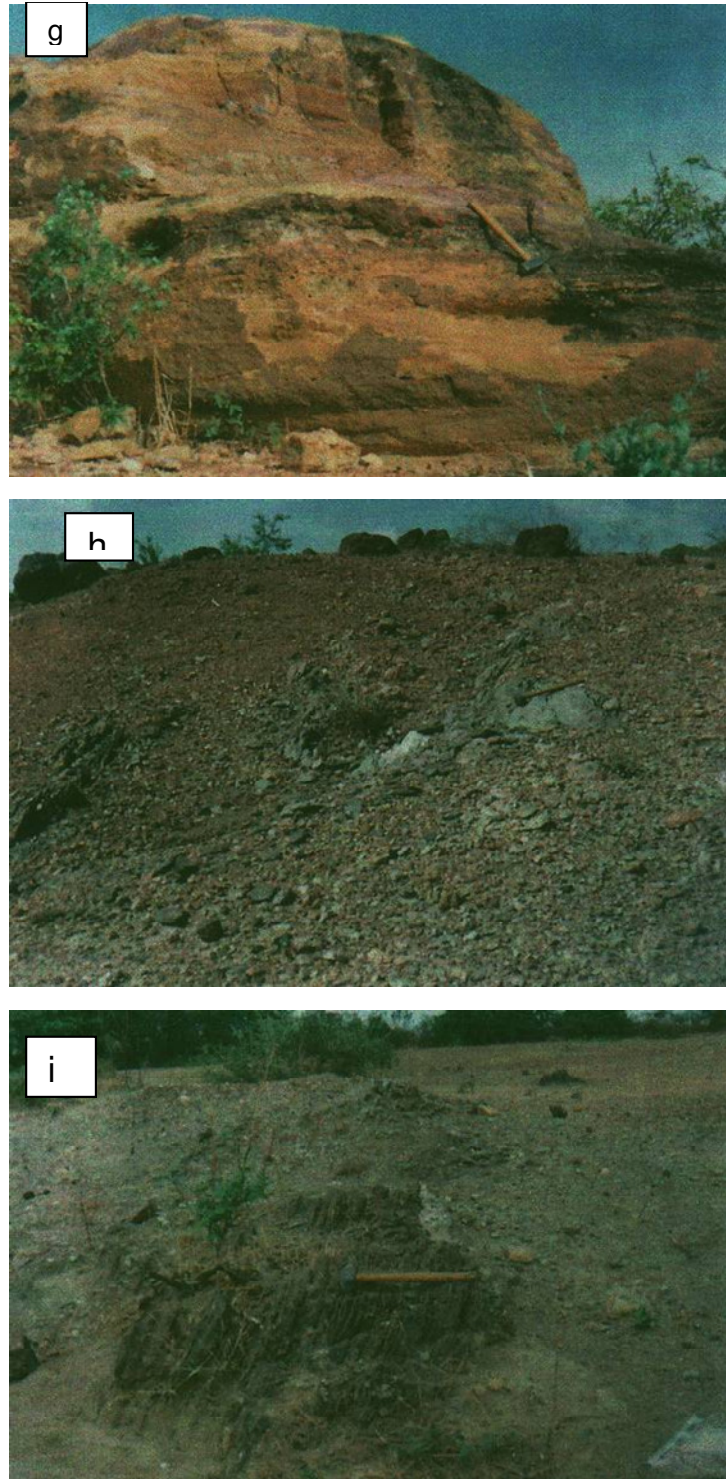


Figure 3. Outcrops of gneisses of sedimentary origin and other metasediments within the study area. (a) Biotite gneiss at Shanono. Light coloured layers are rich in quartz. (b) Biotite gneiss near Kabo showing layers that were originally rich in sand within the sediment as quartzite bands. (c) Biotite gneiss near Tsanyawa with quartz vein (at hammer) showing relic bedding parallel to handle of hammer. (d) Biotite gneiss at Bagwai showing relic bedding. (e) Outcrop of biotite gneiss by a stream channel at Bichi. (g) Outcrop of metasandstone at Ganji. (f) Migmatitic gneiss at stream channel near Karaye. (h) Outcrop of mucovite-biotite schist at Kunchi. (i) Outcrop of biotite schist near Kabo.

migmatite-gneiss complex and schists of the Younger Metasediments represent generally a poor groundwater terrain due to their lithological and structural characteristics. Choice of screen for boreholes located in such area is therefore very critical to yield. Based on information from the grain size analysis and following Johnson (1975), a conservative choice of screen slot for the aquifers will be 0.5 mm.

ACKNOWLEDGEMENT

This research was partially funded by Ahmadu Bello University. The authors are grateful for the financial support. We are also thankful for the assistance rendered by Engineer M. B. Saidu and S. D. Tahir in acquiring information from the Kano Agricultural and Rural Development Authority.

REFERENCES

- Adanu EA (1989). Hydrogeology of the Basement Complex Terrain in the Zaria – Kaduna Area (Nigeria). Ph.D. Thesis, FU TFH TU, Berlin, p. 75.
- Alagbe SA (1987). Hydrogeology of the River Kangimi catchment area, Kaduna State. Unpub. M. Sc. Thesis, Dept. Geol., A. B. U., p. 168.
- Bala AE (2008). Optimum depth for boreholes in regolith aquifer in parts of Northern Nigeria. *Savanna*, 21(1):81 – 90.
- Falconer JD (1911). *The geology and geography of northern Nigeria*, MacMillan, London.
- Federal Surveys (1978). *The National Atlas of the Federal Republic of Nigeria*. Federal Surveys of Nigeria, First Edition, p. 136.
- Hazell JRT, Cratchley CR, Preston AM (1988). The Location of aquifers in crystalline rocks and alluvium in Northern Nigeria using combined electromagnetic and resistivity techniques. *Q. J. Eng. Geol.*, 21:159-175.
- Johnson Division VOP Inc. (1975). *Groundwater and Wells. A Reference Book for the Water Well Industry*, 4th ed. Published by Johnson Division, VOP Inc, Saint Paul Minnesota 55165.
- Jones MJ (1985). The weathered zone aquifers of the basement complex areas of Africa. *Q. J. Eng. Geol.*, 18:35 - 46.
- Kano State Agricultural and Rural Development Authority (KNARDA). (1989). Rural water supply project, Vol. II, Summary of Hydrogeological Data. Final Report, WARDROP Engineering Inc. 24 p. plus Appendices.
- Logan J (1964). Estimating transmissivity from routine production tests of water wells. *Groundwater*, 2:35 – 37.
- Loughnan FC (1969). *Chemical Weathering of the Silicate Minerals*. American Elsevier Publishing Company.
- Mccurry P (1989). A general review of the geology of the Precambrian to Lower Palaeozoic rocks of northern Nigeria. In: Kogbe, C. A. (ed) *Geology of Nigeria*, 2nd Ed., Rock View (Nigeria) Limited.
- Mohammed I (1984). Hydraulic properties of the Basement Complex and Chad Formation aquifers of Kano State based on test-pumping of selected boreholes. M.Sc. Thesis, Dept. Geol., Ahmadu Bello University, Nigeria.
- Muslim I (1984). Report on geological cross sections in Kano State, volume 1. A report of the Water Resources and Engineering Construction Agency (WRECA), Kano.
- Oyawoye MO (1964). The geology of Nigerian Basement Complex – A survey of our present knowledge of them. *J. Niger. Mining Geol. Metallurg. Soc.*, (1)2:87–102.
- Uma KO, Kehinde MO (1994). Potentials of regolith aquifers in relation to water supplies to rural communities: a case study from parts of Northern Nigeria. *J. Mining Geol.*, 30: 97-109.