

Full Length Research Paper

Otolith morphometry and fish length relation of Amblypharyngodon mola (Ham.) from Middle Ganga region (India)

Neetu Nimesh* and Seema Jain

Laboratory of Fish taxonomy, Department of Zoology, RGPG College, CCS University, Meerut, Uttar Pradesh, India

Received 6 August, 2018; Accepted 30 October, 2018

The aim of this study was to determine a correlation between the length, width and weight of otoliths and the length and weight of fish samples of *Amblypharyngodon mola* (Hamilton, 1822), a Rasborine fish caught from Middle Ganga region. Total length (TL) measurements were made with a 1mm precision fish length measuring scale. Image J software was used for measuring otolith length and width. This study shows strong correlation between fish length (TL), otolith length (OL) and width (OW), and similarly shows the correlation between Fish weight (TW) with otolith mass (test, $P < 0.05$). According to this study, Otolith size depends on the fish length and fish weight and the regression coefficients between the relationship of fish length and fish weight with otolith measurements was found to be the best indicator for estimating the growth of fish.

Key words: *Amblypharyngodon mola*, Rasborine fish, otolith morphometry.

INTRODUCTION

Amblypharyngodon mola (Hamilton, 1822), commonly known as 'Indian carplet' or 'pale carplet', is widely distributed in fresh water habitats like ponds, streams, rivers, flood plain wetlands, canal, paddy fields, etc. It is an economically important small Rasborine fish and it belongs to Cyprinidae family. It can be cultured successfully in small seasonal ponds with carps and can be a good income source for the poor class. It has very high content of calcium, iron and vitamin A (Zafri and Ahmad, 1981). This fish is relished by the common man of the region in smoked, dried as well as pickled form. It also has a good demand as an ornamental fish in the

international market. *Mola* is a self-recruiting species and its culture is being encouraged among the farmers in North-East India to overcome the nutritional deficiency (Roos et al., 2002). It is a surface feeding fish with mouth directed upwards and lower jaw the longer. It is an herbivore fish, feeding mainly on algae and aquatic plants and lives in shallow water. Lateral line incomplete extending to 15 scales, with 9 or 10 scales between it and the base of ventral fin (Jain, 1987).

The spawning season of *A. mola* is from February to October. The sex ratio showed a greater number of females over males but with no sexual dimorphism.

*Corresponding author. E-mail: neetunimesh25@gmail.com.



Figure 1. *Amblypharyngodon mola* (Hamilton, 1822).

The reproductive cycle of Mola is from April to October with two peaks, one in May and other in September *that is*, it breeds twice in a year in both closed and open water environment. The lifespan of mola is 4 to 8 years. The maximum length of mola is 20 cm. In a study conducted in two groups of fish length <7 cm and >7 cm, a strong positive and significant length weight relationship was observed (Piska and Waghray, 1986; Gupta and Banergee, 2015).

The otolith of teleost fish is calcareous structures composed of aragonite crystals. Each individual possesses three pairs of otoliths in the inner ear. Among these Sagittae are the largest and most variable (Platt and Popper, 1981). Otoliths serve as a balance organ and help in hearing. They have been used to obtain information about the taxon, age and size of fishes. Besides age and growth determination, the study of otolith is applied in different fields such as fish biology, larval fish ecology, fish stock identification, determination of relation between fish growth and otolith growth and environmental reconstruction of fish habitat (Templemann and Squires, 1956; Mendoza, 2006; Tuset et al., 2008).

Therefore, otolith morphology is an additional characteristic among these species specific criteria (Hossucu et al., 1999). It is used in studies comparing intra-specific and inter-specific variations (Mathur, 2014; Singh, 2015). The otolith morphometric studies on the population of the species for determining the age are considerably significant (Tripple and Beamish, 1987; Campana and Casselman, 1993). It may differ between population of the same species living in different habitats (Zengin et al., 2015).

Sagittal otolith was used for the study as it is the largest among this group of cyprinids. The information about the morphometry of sagittal otoliths of this species is not available and only partial information is present for

some freshwater fish species. The shapes of the otolith of fishes are complex and mostly species specific (Akkiran, 1985). Therefore, Sagittal otolith has been used as taxonomic tool for identifying fishes due to their large size.

The relationship between the fish size and otolith dimensions is of great importance (Battaglia et al., 2010; Zan et al., 2015; Saygin et al., 2017; Zengin et al., 2017).

In this study, relationship between otolith length(OL), Otolith width(OW) and Otolith mass(OM) with fish length(TL) and fish weight(TW) of *Amblypharyngodon mola* which is distributed in Middle Ganga region of India has been studied. This species is widespread and abundant. Its IUCN Red List Status is LC(Least concern). More research about the biology of this species is needed (Chaudhry, 2010).

There is no previous study on otolith morphology and morphometry of *A. mola*.

MATERIALS AND METHODS

The study material consisted of 30 fish samples of species *Amblypharyngodon mola* (Figure 1). Fish samples were caught by local fishermen, using cast net. All the samples were collected from Middle Ganga region of Ganga river (30°-55'N, 70°-7'E), India and brought to laboratory on an ice layer (Figure 2). All the specimens were obtained from local fishermen during the period Jan 2017 to Dec 2017. Total length (TL) of fish was measured to the nearest cm while body weight was recorded to the nearest gram as total weight (TW) including gut and gonads. The morphological identification of the fish was based on a description by (Day, 1878; Jayaram, 1981; Jain, 1987).

Otoliths (total of 30 individuals that is, 60 otoliths) were removed through a cut in the cranium to expose them (Brothers, 1987).

Sagittal otoliths were removed as left and right discrimination for each fish sample. Then, the otoliths were cleaned with distilled water and all the otoliths were air-dried. Each dried otolith was stored in plastic vials. The date and identification number were

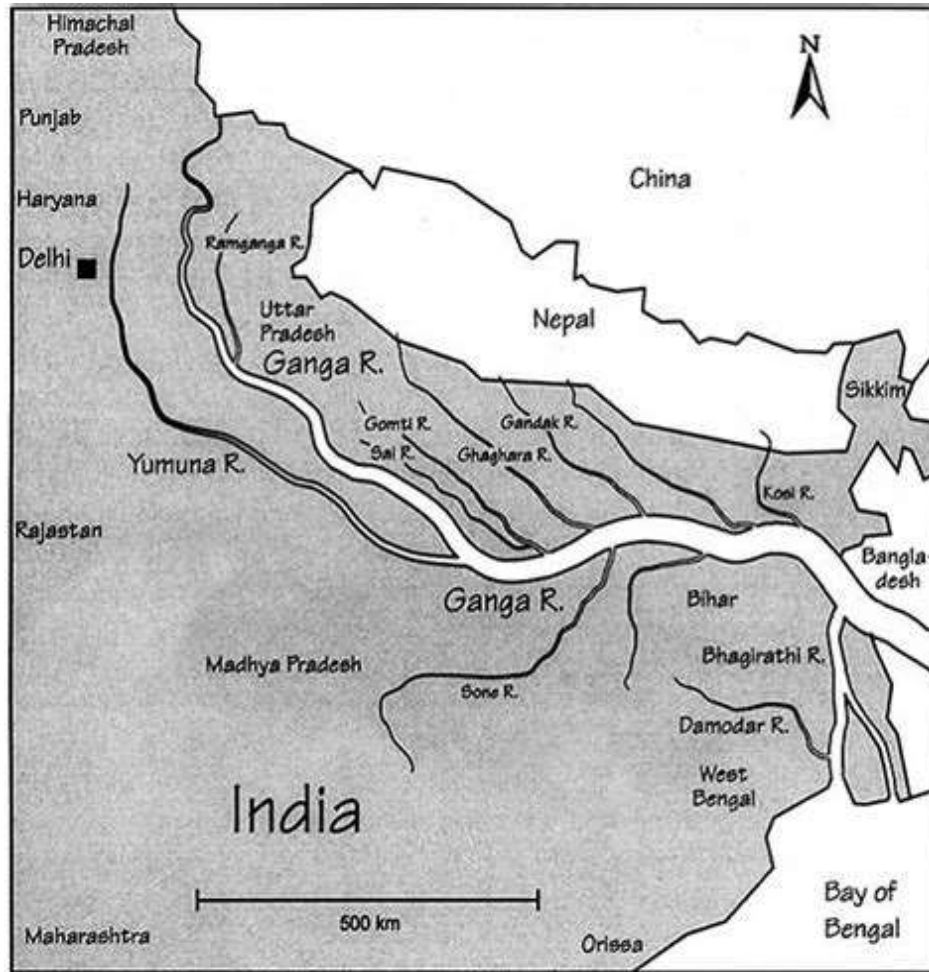


Figure 2. Map showing collection site of *Amblypharyngodon mola* from Middle Ganga region, India (www.mapsofindia.com).

labeled on the plastic vials.

Sagittal otolith were photographed on ventral (Figure 3a) and dorsal side (Figure 3b) using Nikon C-DSS230 with NIS-Elements software for imaging. The magnification used for the photography was 40x and the focal length was equivalent to 35 mm. Otolith width (OW) and otolith length (OL) (Figure 4) were measured by imaging software Image J version 1.51k. Otolith length (OL) is the horizontal distance between the anterior and the posterior tips of the otolith (Harvey et al., 2000). Otolith width (OW) is the vertical distance from the dorsal to the ventral otolith edge. (Battaglia et al., 2010). Otolith mass (OM) was measured using Kab-200 precision scale (± 0.0001 g). Length, width and mass of paired otoliths were measured separately.

The relationship between otolith size (length and width) with fish length (TL) and otolith mass (OM) with fish weight (TW) were determined using least squares linear regression. The parameters calculated were otolith Length (OL)-Fish length (TL), otolith Width (OW), fish length (TL) and Otolith mass (OM) and fish weight (TW).

These parameters were first calculated for both left and right otoliths and t-test was used to check any significant difference between regressions. The significance of linear regressions was carried out to show correlation between fish length (TL) and otolith length (OL) and otolith width (OW), fish weight (TW) with otolith mass (OM) and all the data were statistically analyzed.

RESULTS

In the present study, 30 fishes and 60 otoliths obtained and studied for otolith morphology from middle Ganga region (India). The main descriptive statistics for Fish length (TL), Otolith length (OL), Otolith width (OW), Fish weight (TW) and Otolith mass (OM) are summarized in Table 1.

All the measurements of left and right otoliths were tested and no significant differences were observed from left and right otoliths (t-test, $P < 0.05$), therefore only right otolith was used for the study.

The t test was performed for correlation between fish length (TL) and otolith length (OL) and otolith width (OW) similarly for the fish weight (TW) and otolith mass (OM) using linear regression model (Figure 5a,b,c).

This study shows strong correlation between Fish length (TL) -otolith length (OL) and width (OW), and similarly shows the correlation between Fish weight (TW) with otolith mass (test, $P < 0.05$). According to this study,

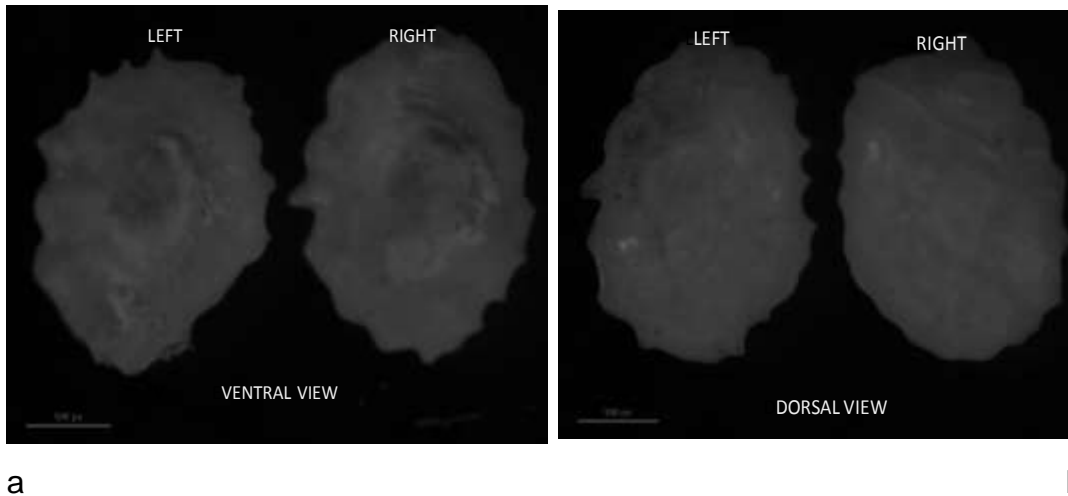


Figure 3. Photograph showing Ventral view (a) and Dorsal view of Left and right saggital otolith of *Amblypharyngodon mola*.

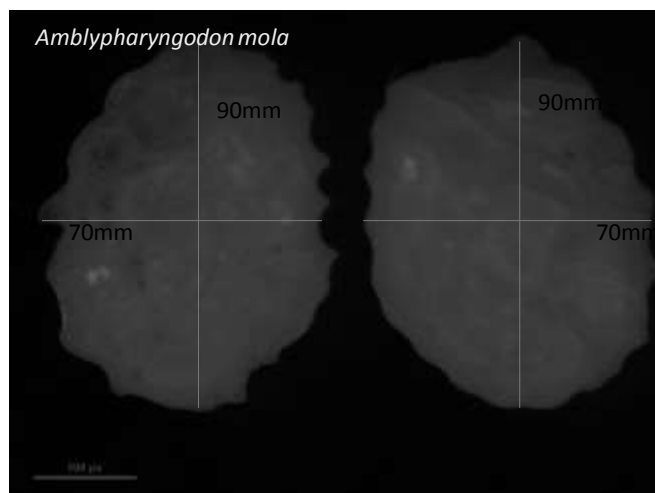


Figure 4. Morphometric measurements of right and left saggital otoliths of *Amblypharyngodon mola* using software Image J (Version 1.51k).

Otolith size depends on the fish length and fish weight and the regression coefficients between the relationship of fish length and fish weight with otolith measurements was found to be the best indicator for estimating the growth of fish.

DISCUSSION

In the present study, relationship between fish length and otolith length, width and weight was analyzed by linear regression model. Otolith dimensions and weight was linearly correlated to total fish length and fish weight

(Hunt, 1992; Javor et al., 2011). The results of this study are in accordance with other studies. The first study to demonstrate a significant positive relationship between otolith size and fish size of Barents Sea Cod (*Boreogadus saida*) and haddock by (Trout, 1954; Templemann and Squires, 1956). In line, Harvey et al. (2000) stated positive relationship between fish size and otolith length for 63 species of fishes from the Eastern North Pacific Ocean. In the result of a study, a medium positive linear correlation between the otolith length and fish length in *Chondrostoma regium* (Aydin et al., 2004). This relationship is not so strong like other studies and this could be due to physiochemical factors of water in

Table 1. Range, mean, standard deviation (SD), fish length (TL), fish weight (TW),and Otolith length (OL), width (OW) and mass (OM) of *Amblypharyngodon mola* from Middle Ganga region (India) .

Area	Parameter	Number	Minimum	Maximum	Mean	SD
Middle Ganga region (India)	Fish length (cm)	30	1.4	7.4	4.49	2.19
	Fish weight (g)	30	2.1	9	5.65	1.96
	Otolith length (mm)	60	54	100	7.51	14.9
	Otolith width (mm)	60	40	88	7.52	14.4
	Otolith mass (mg)	60	0.001	0.004	0.002	0.0011

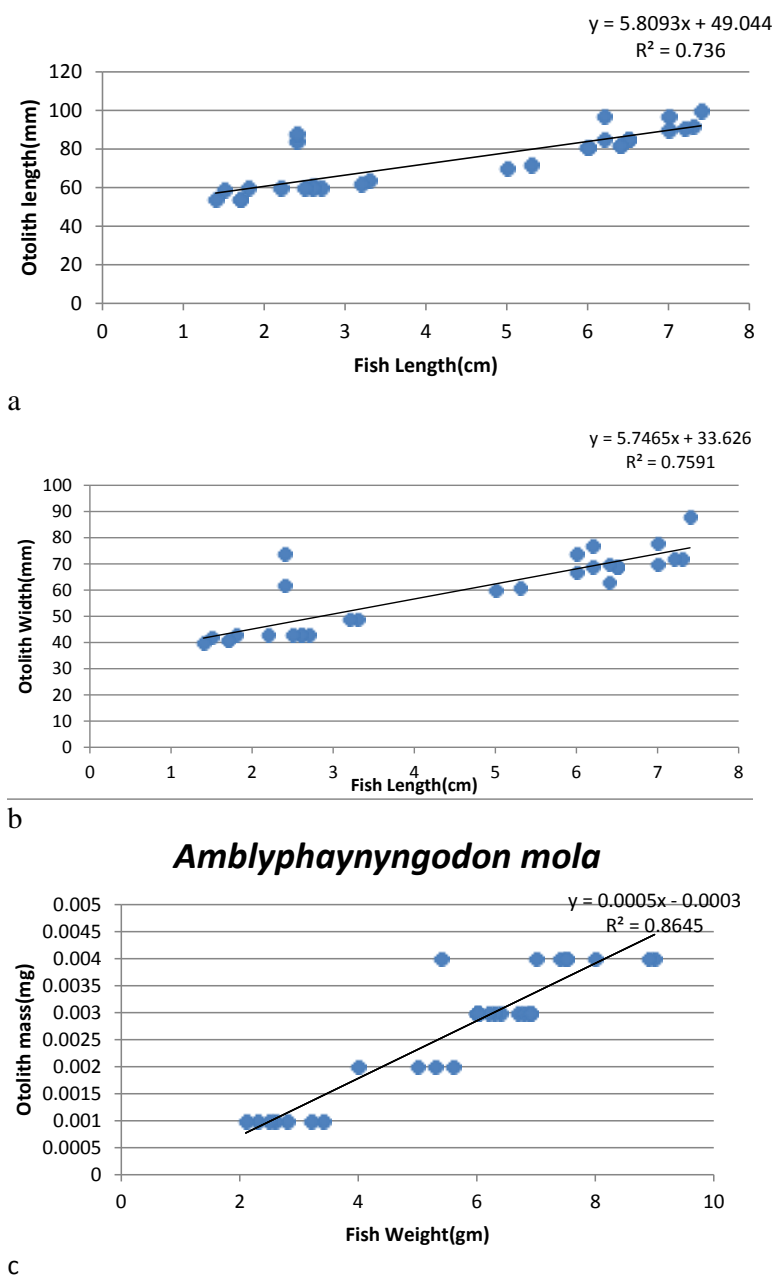


Figure 5. Showing Linear relationship between-(5a) Fish length-Otolith length,(5b) Fish length-otolith width and (5c) Fish weight-otolith mass relationship in *Amblypharyngodon mola*.

Similarly, a single linear relationship was plotted between otolith size and fish length of the carangid fish living along the coast of the Sea of Oman (Jawad et al., 2012). Dehghani et al. (2016) reported that fish length and otolith growth have a positive relationship and there were no significant differences between left and right otolith or between males and females in *Sardinella sindensis*. Saygin et al. (2017) applied power model to estimate the relationships between the otolith measurements and fish length.

The shape of otolith is regulated genetically and the otolith size is influenced by environmental condition (Lombarte and Leonart, 1993). According to a study, the fishes from different regions have different allometric growth of the otolith (Butler et al., 1996).

The result of this study suggested that otolith dimensions increases as fish length increases and therefore otolith length can be correlated with fish growth as also observed on *S.lemuru* from Australia (Gaughan and Mitchell, 2000). In a study estimated prey body size from Otoliths. Length weight relationships between otolith size (length, height, weight and aspect ratio) and fish size (total length and weight) were determined for four fish species captured in the Arabian Sea, West coast of India (*Psenopsis cyanea*, *Pterygotrigla hemisticta*, *Bembrops caudimacula*; *Hoplostethus rubellopterus*). No significant differences were noticed in the morphology of left and right otoliths of all four species. The length weight relationship of the otolith of all the four species showed a negatively allometric growth pattern (Kumar et al., 2017). Thus, it can be concluded that, the morphometric relationships are important factor for fish biology, feeding studies, paleontology and for fish stock monitoring of *Amblypharyngodon mola*.

CONFLICTS OF INTEREST

The authors have not declared any conflict of interest.

REFERENCES

- Akkiran N (1985). A Systematic study on Carangidae (Pisces) Employing the Otolith characters in the Eastern Mediterranean. Biljeske-Notes 63:1-9.
- Aydin R, Calta M, Sen D, Coban MZ (2004). Relationships between fish lengths and otolith length in the population of *Chondrostoma regium*(Heckel,1843) Inhabiting Keban Dam Lake. Pakistan Journal of Biological Science 7(3):1550.
- Battaglia P, Malara D, Romeo TA (2010). Relationship between Otolith size and fish size in some mesopelagic and bathypelagic species from the Mediterranean Sea (Strait of Messina), Italy. Scientia Marina 74:605-612.
- Brothers EB (1987). Methodological approaches to the examination of otoliths in aging studies. The age and growth of fish pp. 319-330.
- Campana SE, Casselman J (1993). Stock discrimination using otolith shape analysis Canadian Journal of Fisheries and Aquatic Sciences 50:1062-1083.
- Chaudhry S (2010). *Amblypharyngodon mola*. The IUCN Red List of Threatened Species.2010: e.T166521A6227212'. doi: org/10.2305/IUCN.UK.2010-4.RLTS.T166521A6227212.en.
- Day F (1878). The Fishes of India: being a natural history of fishes known to inhabit the Seas and Freshwaters of India, Burma and Ceylon, London, Reproduced by Williams Dowson and Sons 778 p.
- Dehghani M, Kamrani E, Salarpouri A, Sharifian S (2016). Otolith dimensions (length,width),otolith weight and fish length of *Sardinella sindensis* (Day,1878),as index for environmental studies,Persian Gulf,Iran. Marine Biodiversity Records 9:44.
- Gaughan D, Mitchell RWD (2000). The biology and stock assessment of the tropical sardine,*Sardinella lemuru*,off the mid west coast of western Australia Fish.Western Australia:Final Report to Fisheries Research and Development Corporation on Project No.2000/135.Department of Fisheries.
- Gupta S, Banergee S (2015). Length–weight relationship of *Amblypharyngodon mola* (Ham.-Buch., 1822), a freshwater cyprinid fish from West Bengal, India', Zoology and Ecology 25(1):54-58.
- Harvey JT, Loughlin TR, Perez MA, Oxman DS (2000). Relationship between fish size and otolith length for 63 species of fishes from the eastern north pacific Ocean. NOAA Technical Report NMFS 150:35.
- Hossucu B, Kaya M, Taskavak E (1999). An investigation of growth parameters and otolith-Total length relationship of *Solea solea*(L.,1758)(Pisces: Soleidae) in Izmir Bay. Israel Journal of Zoology 45(4):277-287.
- Hunt JJ (1992). Morphological characteristics of otoliths for selected fish in the Northwest Atlantic. Journal of Northwest Atlantic Fisheries Science 13:63-75.
- Jain S (1987). The Study of Indian Rasborinae in relation to Taxonomy. PhD Thesis,Garhwal University, Srinagar (Uttaranchal). India.
- Javor B, Lo N, Vetter R (2011). Otolith morphometrics and population structure of pacific sardine (*Sardinops sagax*) along the west coast of North America. Fish Bulletin 109(15):402.
- Jawad LA, Al-Mamry JM, Al-Mamari HM, Al-Yarubi MM, AL-Busaidi HK (2012). Relationship between fish length and otolith length,width and weight of *Rhynchorhamphus georgi* (Valenciennes, 1846) (Family: Hemiramphidae) collected from Oman Sea. Romanian Journal of Biology 56:189-200.
- Jayaram K (1981). The freshwater fishes of India- A Handbook Zoological Survey of India.
- Butler JL, Granados-G ML, Barnes JT, Yaremko M, Macewicz B (1996). Age composition, growth and maturation of Pacific sardine *Sardinops sagax* during 1994. California cooperative Oceanic Fisheries Investment Report 37:152-159.
- Kumar KVA, Deepa KP, Hashim M, Vasu C, Sudhakar M (2017). Relationships between fish size and otolith size of four bathydemersal fish species from the south eastern Arabian Sea, India. Applied Ichthyology 33:102-107.
- Lombarte A, Leonart J (1993). Otolith size changes related with body growth,habitat depth and temperature. Environmental Biology of Fishes 37:297-306.
- Mathur S (2014). Comparative study of otolith in native species of Genus *Channa* (Gronovirus) with reference to taxonomic importance. PhD Thesis, CCSU, Meerut, India.
- Piska RS, Waghay S (1986).Some aspects of reproductive biology of *Amblypharyngodon mola* (Ham.).Geobios 13:204-207.
- Platt C, Popper AN (1981). Fine structure and function of the year., Springer Verlag. New York.
- Mendoza RPR (2006). Otolith and their applications in Fishery Science.Ribarstvo 64(3):89-102.
- Roos N, Leth T, Jakobsen J, Thilsted SH (2002). High vitamin A content in some small indigenous fish species in Bangladesh: perspectives for food based strategies to reduce vitamin A deficiency. International Journal of Food Sciences and Nutrition 53:425-437.
- Saygin S, Ozpicak M, Mahmut ELP, Polat N, Atici AA, Odun NK (2017). Comparative analysis of otolith features of Tarek(*Alburnus tarichi*)(Guldenstadt,1814) from different lakes across Van Basin (Van, Ercek,Nazik,Aygur) (Turkey). Limnofish-Journal of Limnology and Freshwater Fisheries Research 3(2):91-99.
- Singh N (2015). Comparative studies of otolith in native species of Genus: *Labeo* with special reference to its taxonomic importance. PhD Thesis, CCSU, Meerut, India.
- Templemann W, Squires H (1956). Relationship of otolith lengths and weights in the haddock, *Melanogrammus aeglefinus* (L.), to the growth of the fish. Journal of Fisheries Research Board of Canada

- 13:467-487.
- Tripple EA, Beamish F (1987). Characterizing piscivory from ingested remains. Transaction of the American Fisheries society pp. 773-776.
- Trout CC (1954). Otolith growth of the Barents Sea cod. Rapp. PV. Reun. Cons. Int. Explor. Mer, 150:297-299.
- Tuset VM, Lombarte A, Assis C (2008). Otolith atlas for the western Mediterranean, north and central eastern Atlantic. Scientia Marina 72(1):7-198.
- Zafri A, Ahmed K (1981). Studies on the vitamin A content of fresh water fishes. Content and distribution of vitamin A in mola (*A. mola*) and dhela (*Rohtee cotio*). Bangladesh Journal of Biological Sciences 10:47-53.
- Zan XX, Zhang C, Xu BD, Zhang C (2015). Relationship between fish size and otolith measurements for 33 fish species caught by bottom trawl in Haizhou Bay, China. Journal of Applied Ichthyology 31:444-448.
- Zengin M, Saygin S, Polat N (2015). Otolith shape analysis and dimensions of Anchovy *Engraulis encrasicolus* L. in the Black and Marmara Seas. Sains Malaysiana 44(5):657-662.
- Zengin M, Saygin S, Polat N (2017). Relationships between otolith size and total length of bluefish, *Pomatomus saltatrix* (Linnaeus, 1766) in Black Sea (Turkey). North-Western Journal of Zoology 13(1):169-171.