

Full Length Research Paper

Study of inter-specific relationship in six species of *Sesbania* Scop. (Leguminosae) through RAPD and ISSR markers

Manoj Kumar Bisoyi¹, Laxmikanta Acharya², Arup Kumar Mukherjee^{3, 4*} and Pratap Chandra Panda²

¹Department of Botany and Biotechnology, Khallikote Autonomous College, Berhampur, Orissa, India.

²Division of Taxonomy and Conservation, Regional Plant Resource Centre, Nayapalli, Bhubaneswar, Orissa, India

³DNA Fingerprinting Laboratory, Division of Plant Biotechnology, Regional Plant Resource Centre, Nayapalli, Bhubaneswar, Orissa, India.

⁴Central Institute for Cotton Research, Shankar Nagar PO, Nagpur-440010, Maharashtra, India.

Accepted 8 March, 2010

Six species of *Sesbania* were fingerprinted using RAPD and ISSR markers. Both markers yielded a total of 249 bands out of which 243 were polymorphic in nature indicating high degrees of genetic diversity in the genus. Cluster analysis using the combined data revealed segregation of the lone species *Sesbania grandiflora* from the rest of the species. High boot strap values in the dendrograms show the accuracy and authenticity of the result. All other five species got separated to a distinct cluster. This supports the taxonomic division of the genus *Sesbania* into *Agati* Desv. comprising the only species *S. grandiflora* (Linn.) Poir. and sub-genus *Eusesbania* Baker containing all other species.

Key words: *Sesbania*, RAPD, ISSR and phenogram.

INTRODUCTION

The genus *Sesbania* Scop. belongs to the family Leguminosae under the tribe Robinieae and is comprised of about 60 tropical and subtropical species of herbs, shrubs or small trees (Mabberley, 1997; Veasey et al., 1999). Their nitrogen fixing ability enables these plants to grow rapidly on nitrogen deficient soils and allows their utilization for green manuring in paddy fields, for intercropping and ground cover, and for agroforestry and wood production (Ndoye et al., 1990). Baker (1876) divided the genus *Sesbania* occurring in British-India into two sub-genera namely, *Agati* Desv. comprising of the only species *Sesbania grandiflora* (Linn.) Poir. and all other species were included under the sub-genus *Eusesbania* Baker. Others preferred to split the genus in to four subgenera: *Agati*, *Daubentonia*, *Pterosesbania* and *Sesbania* (Monteiro, 1984). Subgenus *Sesbania*, originating from the Old World and later dispersed throughout the New World, has the greatest number of

species including the perennial *Sesbania sesban*, which has been widely utilized in agriculture for livestock forage and green manure (Brewbaker et al., 1990). *S. grandiflora* of subgenus *Agati*, originating in the Old World (Australia and Asia), together with *S. sesban* have been utilized extensively in traditional agroforestry systems (Bray et al., 1997) and as high protein fodder, fuelwood and construction material.

The infra-generic classification and phylogeny of the genus *Sesbania*, which is based entirely on morphological characters like habit and pod characters, have been a matter of controversy over the years. Though genetic diversity assessment have been made on some African species of *Sesbania* (Jamnadass et al., 2005), very little work has been done in Asia except that of Joshi-Saha and Gopalakrishna (2007), who studied the agro-morphological and genetic variability in five shrubby species of *Sesbania* (under the sub-genus *Sesbania*) collected from India, Philippines and Australia using only ISSR marker. Besides, Saraswati et al. (1993) and Veasey et al. (2002) have used seed proteins and isozymes for identification and characterization of *Sesbania* species and germplasm. The present investigation on

*Corresponding author. E-mail: titirtua@gmail.com. Tel: 91-7103-275536 (O), 2556912. Fax: 91-7103 -275529.

molecular profiling of six species of *Sesbania* aims at authenticating the classification and phylogeny of this economically important group of plants through RAPD and ISSR analysis.

During the last two decades, molecular markers have been widely used for molecular taxonomic studies in plants as a whole and flowering plants in particular. This has been due to parallel revolutions in theory, computing and molecular technology, whose synergies have resulted in the focusing of the discipline of systematics on the production of phylogenetic trees.

Different molecular markers used for genetic fingerprinting and deriving phylogenetic relationship include random amplified polymorphic DNA (RAPD), restriction fragment length polymorphism (RFLP), amplified fragment length polymorphism (AFLP), simple sequence repeat (SSR), inter simple sequence repeat (ISSR), etc. Among the molecular markers, RAPD is the most common, less complex and easy technique having application in genetic variability assessment and breeding programmes (Bonnin et al., 2004; Fritsch and Rieseberg, 1996). Besides, ISSR marker is also used for genetic characterization of different plant species as an alternative technique to study polymorphism based on the presence of micro-satellites throughout genomes (Zietkiewicz et al., 1994).

We report here the inter-specific relationship and phylogeny of six species of *Sesbania* as revealed through RAPD and ISSR markers and to authenticate the taxonomic status of the two sub-genera *Agati* Desv. and *Eusesbania* Baker under *Sesbania* Scop.

MATERIALS AND METHODS

Plant materials

Fresh leaf samples from six species of *Sesbania* were collected from Bhubaneswar and its adjoining regions for DNA isolation. After extraction, the DNA samples were preserved for future use at -85°C. The voucher specimens were deposited in the Herbarium of Regional Plant Resource Centre, Bhubaneswar, India.

Isolation of genomic DNA

Genomic DNA isolation

DNA was isolated from freshly collected young leaves by the CTAB method as described by Doyle and Doyle (1990). RNA was extracted with RNaseA (Quiagen) treatment: @ 60 µg for 1 ml of crude DNA solution at 37°C followed by two washings with phenol/chloroform/ iso-amyl-alcohol (25:24:1v/v/v) and subsequently two washings with chloroform/ iso-amyl-alcohol (24:1 v/v). After centrifugation, the upper aqueous phase was separated, 1/10 volume 3 M-sodium acetate (pH 4.8) added and DNA precipitated with 2.5 volume of pre-chilled absolute ethanol. The extracted DNA was dried and then dissolved in 10 mM Tris-HCl [Tris(hydroxy methyl) amino methane]/1 mM EDTA (ethylene diamine tetra acetic acid, disodium salt)[T₁₀E₁ buffer pH 8]. Quantification was made by running the dissolved DNA in 0.8% agarose gel along side uncut λ DNA of known concentration. The DNA was diluted to 25 ng/µl

for RAPD and ISSR analysis.

Random amplified polymorphic DNA (RAPD) analyses

Nineteen random decamer oligonucleotide primers of A, AF, C, D and N series (Operon Technologies, Alameda, USA) as detailed in Table 1 were used for polymerase chain reaction (PCR) for RAPD analysis. The primers were dissolved in double sterilized T₁₀E₁ buffer (pH 8.0) to the working concentration of 15 ng/µl. The RAPD analysis was performed as per the methods of Williams et al. (1990). Each amplification reaction mixture of 25 µl contained 20 ng of template DNA, 2.5 µl of 10X assay buffer (100 mM Tris-HCl, pH 8.3, 0.5 M KCl and 0.01% gelatin), 1.5 mM MgCl₂, 200 µM each of dNTPs, 20 ng of primer and 0.5U Taq DNA polymerase (Bangalore Genei Pvt. Ltd., Bangalore, India). The amplification was carried out in a thermal cycler (Applied Biosystems, 9700). The first cycle consisted of denaturation of template DNA at 94°C for 5 min, primer annealing at 37°C for 1 min and primer extension at 72°C for 2 min. In the subsequent 42 cycles, the period of denaturation was reduced to 1 min while the primer annealing and primer extension time was maintained as in the case of the first cycle. The last cycle consisted of only primer extension at 72°C for 7 min.

Inter simple sequence repeat (ISSR) analyses

Two selected inter simple sequence repeats (Bangalore Genei Pvt. Ltd., Bangalore, India) were used for PCR amplification. Each amplification reaction mixture of 25 µl contained 20 ng of template DNA, 2.5µl of 10X assay buffer (100 mM Tris-HCl pH 8.3, 500 mM KCl and 0.1% gelatin), 1.5 mM MgCl₂, 200 µM each of dNTPs, 15 ng of primer and 0.5U Taq DNA polymerase (Bangalore Genei Pvt. Ltd., Bangalore, India). The amplification was carried out in a thermal cycler (Applied Biosystem, Model 9700). The first step consisted of holding the sample at 94°C for 5 min for complete denaturation of the template DNA. The second step consisted of 42 cycles, each cycles consisted of three temperature steps that is, 92°C 1 min for denaturation of template, 45 - 54°C; 1 min for primer annealing and 72°C for 2 min. for primer extension followed by 72°C for 7 min for complete polymerization.

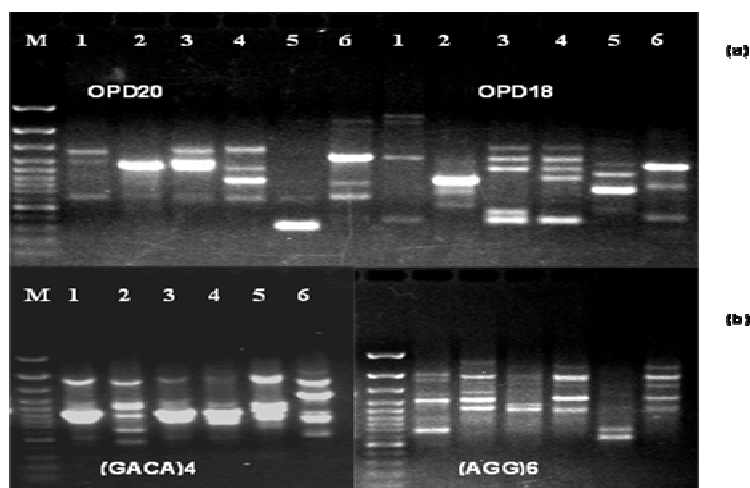
The PCR products obtained from RAPD and ISSR were separated in 1.5 and 2% agarose gel respectively containing ethidium bromide solution (0.5 µg/ml of gel solution). The size of the amplicons was determined using standards (100 bp ladder plus, MBI Fermentas, Graiciuno, Vilnius, Lithuania). The DNA fragments were observed under UV light and photographed.

Data analysis

Jaccard's coefficient of similarity (Jaccards et al., 1908) was measured and a phylogram was generated by outweighed pair group method using arithmetic averages (UPGMA) (Sneath and Sokal, 1973) and SAHN clustering. Most informative primers were obtained by comparing all the primers with that of the pooled data using Mantel Z statistics (Mantel, 1967). All analyses were performed using the statistical package NTSYS pc 2.02e (Rohlf, 1997). Resolving power of the RAPD and ISSR primer were calculated as per Prevost and Wilkinson (1999). The RAPD primer index (RPI) was calculated from the polymorphic index (PIC), which was calculated as $PIC = 1 - \sum P_i^2$; P_i being the band frequency of the ith allele (Smith et al., 1997). In the case of RAPDs and ISSRs, the PIC was calculated as $1 - p^2 - q^2$, where p is band frequency and q is no band frequency (Ghislain et al., 1999). PIC value was then used to calculate the RAPD/ISSR primer index (RPI/SPI). RPI is the sum of the PIC of all the markers amplified by the same primer. Principal

Table 1. Details of RAPD banding pattern in six different species of *Sesbania*.

| Primer | Nucleotide sequence | Range of amplicons (Bp) | Total no. of Bands | No. of polymorphic bands | No. of monomorphic bands | No. of unique bands | Resolving power | Primer index |
|--------|---------------------|-------------------------|--------------------|--------------------------|--------------------------|---------------------|-----------------|--------------|
| OPA04 | AATCGGGCTG | 2800-350 | 15 | 15 | 0 | 9 | 8.67 | 5.11 |
| OPAF03 | GAAGGAGGCA | 2900-475 | 17 | 17 | 0 | 9 | 10.33 | 6.28 |
| OPAF04 | TTGCGGCTGA | 2100-475 | 12 | 12 | 0 | 8 | 7.67 | 4.28 |
| OPAF06 | CCGCAGTCTG | 3200-550 | 10 | 10 | 0 | 6 | 5.67 | 3.5 |
| OPAF11 | ACTGGGCCTG | 2500-400 | 12 | 11 | 1 | 7 | 9.33 | 3.44 |
| OPAF14 | GGTGCGCACT | 2400-500 | 9 | 8 | 1 | 4 | 6.33 | 2.94 |
| OPAF15 | CACGAACCTC | 3000-650 | 11 | 11 | 0 | 10 | 4.67 | 3.22 |
| OPC06 | GAACGGAATC | 1900-850 | 8 | 8 | 0 | 7 | 3 | 2.39 |
| OPC10 | TGTCTGGTGG | 2100-250 | 8 | 8 | 0 | 5 | 5 | 2.61 |
| OPC11 | AAAGCTGCGG | 2600-550 | 10 | 10 | 0 | 6 | 5 | 3.5 |
| OPC12 | TGTCATCCCC | 2900-500 | 13 | 13 | 0 | 12 | 5 | 3.83 |
| OPD02 | GGACCCAACC | 2100-900 | 3 | 2 | 1 | 1 | 2.67 | 0.55 |
| OPD03 | GTCGCCGTCA | 1700-900 | 2 | 1 | 1 | 1 | 2.33 | 0.27 |
| OPD08 | GTGTGCCCCA | 3000-400 | 17 | 17 | 0 | 12 | 8 | 5.66 |
| OPD18 | GAGAGCCAAC | 2800-350 | 14 | 14 | 0 | 7 | 8 | 5.11 |
| OPD20 | ACCCGGTCAC | 2300-350 | 9 | 8 | 1 | 5 | 5.67 | 2.72 |
| OPN03 | GGTACTCCCC | 1600-575 | 6 | 6 | 0 | 1 | 3.33 | 2.11 |
| OPN06 | GAGACGCACA | 3500-350 | 15 | 15 | 0 | 10 | 8.33 | 5.05 |
| OPN15 | CAGCGACTGT | 1800-450 | 11 | 11 | 0 | 9 | 4.33 | 3.39 |
| Total | | | 202 | 197 | 5 | 131 | | |

**Figure 1.** RAPD (a) and ISSR (b) banding pattern in 6 species of *Sesbania*.

co-ordinate analysis (PCA) was used to retrieve information about the clustering pattern of the analyzed population. PCA was performed based on the RAPD and ISSR data for all the primers (Semagn et al., 2000).

RESULTS AND DISCUSSION

Out of the twenty-five random decamer oligonucleotide

primers used for RAPD analysis, 19 primers responded well and gave very good amplification. The RAPD banding pattern is represented in Figure 1a. All the primers gave wide range of fragments ranging from 250 to 3500 bp. The highest number of fragments (17) were amplified by the primer OPAF3 and lowest by OPD03 (2). The primer OPAF3 yielded maximum number of polymorphic bands (17) and the least number polymorphic

Table 2. Details of ISSR banding pattern in six species of *Sesbania*.

| Primer | Range of amplicons (Bp) | Total no. of bands | No. of monomorphic bands | No. of polymorphic bands | No. of unique bands | Resolving power | Primer index |
|---------------------|-------------------------|--------------------|--------------------------|--------------------------|---------------------|-----------------|--------------|
| (GA) ₉ T | 2000-450 | 11 | 11 | 0 | 5 | 6 | 4.11 |
| T(GA) ₉ | 1500-400 | 9 | 9 | 0 | 5 | 6 | 3 |
| (AGG) ₆ | 2300-550 | 13 | 13 | 0 | 8 | 8.33 | 4.5 |
| (GACA) ₄ | 2100-450 | 14 | 13 | 1 | 9 | 8.67 | 4.44 |
| Total | | 47 | 46 | 1 | 27 | | |

Table 3. Details of RAPD and ISSR band sharing in six species of *Sesbania*.

| Primer name | <i>S. javanica</i> | <i>S. speciosa</i> | <i>S. cannabina</i> | <i>S.rostrata</i> | <i>S. grandiflora</i> | <i>S. aculeata</i> |
|---------------------|--------------------|--------------------|---------------------|-------------------|-----------------------|--------------------|
| OPA04 | 5 | 4 | 6 | 4 | 4 | 3 |
| OPAF03 | 4 | 5 | 5 | 6 | 5 | 6 |
| OPAF04 | 4 | 5 | 3 | 4 | 2 | 5 |
| OPAF06 | 1 | 4 | 4 | 2 | 2 | 4 |
| OPAF11 | 3 | 6 | 6 | 5 | 3 | 5 |
| OPAF14 | 3 | 3 | 4 | 3 | 3 | 3 |
| OPAF15 | 4 | 2 | 1 | 2 | 3 | 2 |
| OPC06 | 3 | 1 | 3 | 1 | 1 | 0 |
| OPC10 | 4 | 2 | 4 | 2 | 2 | 1 |
| OPC11 | 2 | 3 | 3 | 4 | 2 | 1 |
| OPC12 | 4 | 3 | 3 | 2 | 1 | 2 |
| OPD02 | 1 | 1 | 1 | 1 | 1 | 3 |
| OPD03 | 1 | 1 | 1 | 1 | 2 | 1 |
| OPD08 | 4 | 4 | 2 | 6 | 2 | 6 |
| OPD18 | 3 | 4 | 5 | 5 | 3 | 4 |
| OPD20 | 4 | 2 | 4 | 3 | 2 | 2 |
| OPN03 | 4 | 3 | 1 | 1 | 2 | 0 |
| OPN06 | 6 | 4 | 4 | 2 | 4 | 5 |
| OPN15 | 2 | 3 | 2 | 3 | 2 | 1 |
| (GA) ₉ T | 3 | 2 | 3 | 4 | 2 | 4 |
| T(GA) ₉ | 3 | 3 | 3 | 3 | 3 | 3 |
| (AGG) ₆ | 5 | 5 | 4 | 5 | 2 | 5 |
| (GACA) ₄ | 6 | 4 | 4 | 4 | 5 | 4 |
| Total | 78 | 74 | 74 | 73 | 58 | 68 |

bands in case of OPD03 (1). Interestingly, each of the primers OPD02, OPD03, OPD20, OPAF06, and OPAF11 produced one mono-morphic band and none in case of other primers. The total numbers of unique bands amplified were 131. The primers OPD08 and OPC12 produced the maximum number of 12 unique bands. The resolving power (RP) and RAPD primer index (RPI) was highest (10.33 and 6.277 respectively) in case of OPAF03 and lowest (2.33 and 0.277 respectively) for OPD03.

Four ISSR primers yielded 47 bands out of which 46 were polymorphic and only one band was monomorphic in nature. Of the polymorphic bands, only 27 bands were

unique. The amplicons were in the range of 400 to 2300 base pairs. The resolving power for the four primers (GA)₉T, T (GA)₉, (AGG)₆, (GACA)₄ were 6, 6, 8.33 and 8.67 and the primer index of 4.11, 3, 4.5 and 4.44 respectively (Table 2). The ISSR banding pattern is represented in Figure 1b.

The total number of bands amplified by RAPD and ISSR markers was highest in *Shorea javanica* (78) and lowest in *S. grandiflora* (58) (Table 3). The dendrogram constructed on the basis of both RAPD and ISSR data showed two distinct clusters (Figure 2). *S. grandiflora* was singled out from the rest five species, which formed a distinct clade and shared a node with high bootstrap

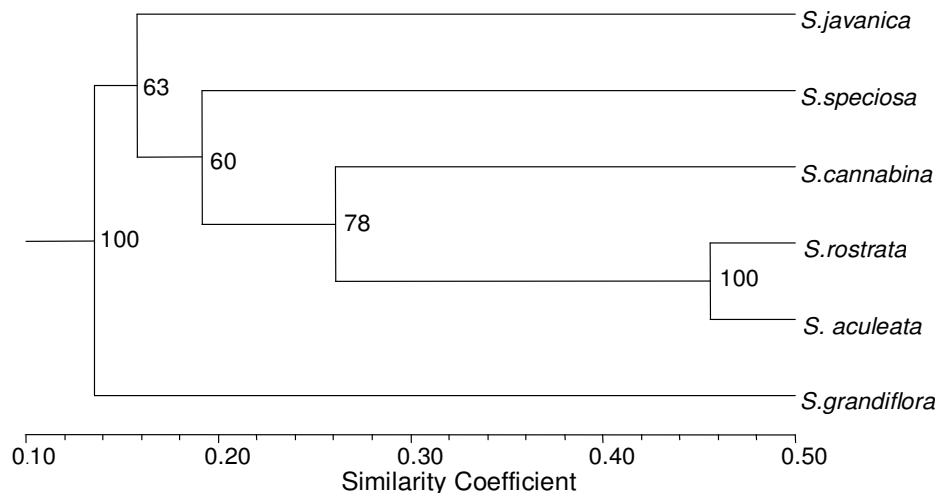


Figure 2. Dendrogram representing genomic relationship among 6 species of *Sesbania* using RAPD and ISSR markers (values written in between nodes indicating 100 bootstrap value).

Table 4. Jaccard's similarity among different members of *Sesbania*.

| | <i>S. javanica</i> | <i>S. speciosa</i> | <i>S. canabina</i> | <i>S. rostrata</i> | <i>S. grandiflora</i> | <i>S. aculeata</i> |
|-----------------------|--------------------|--------------------|--------------------|--------------------|-----------------------|--------------------|
| <i>S. javanica</i> | 1.00 | | | | | |
| <i>S. speciosa</i> | 0.125 | 1.00 | | | | |
| <i>S. cannabina</i> | 0.22 | 0.18 | 1.00 | | | |
| <i>S. rostrata</i> | 0.15 | 0.21 | 0.29 | 1.00 | | |
| <i>S. grandiflora</i> | 0.11 | 0.15 | 0.15 | 0.17 | 1.00 | |
| <i>S. aculeata</i> | 0.14 | 0.17 | 0.24 | 0.45 | 0.13 | 1.00 |

value (100). *Sesbania rostrata* and *Sesbania aculeata* were closely related to each other with Jaccard's similarity of 0.455 (Table 4) and bootstrap value of 100. *S. javanica* and *S. grandiflora* were remotely placed with a similarity of 0.112. Co-phenetic correlation was found to be maximum between *S. aculeata* and *S. rostrata* (0.455) and minimum between *S. javanica* and *S. grandiflora* (0.112). This was further supported by the high bootstrap value (60 - 100) of different nodes of the dendrogram.

When the pairing by chance was calculated from the combined data it was found to be negligible (1.226×10^{-51}). Principal co-ordinate analysis (PCA) showed that all the species were distinctly placed (Figure 3) and follow a pattern similar to that obtained in the dendrogram. *S. grandiflora* was clearly separated out from all others and *Sesbania cannabina*, *S. aculeata* and *S. rostrata* formed a distinct cluster. Correlation between combined markers with RAPDs and ISSRs showed a high degree of correlation with 'r' values of 0.991 and 0.922 respectively. The correlation between RAPD and ISSR marker was also equally high ($r = 0.922$).

In the present investigation, six species of *Sesbania* were fingerprinted using RAPD and ISSR markers. Of the 25 RAPD primers used, six primers did not give

satisfactory amplification. Similar observation was earlier made in the legume sub-tribe Millettieae (Acharya et al., 2004) and in ginger cultivars (Nayak et al., 2005). RAPD and ISSR markers yielded a total number of 249 bands out of which 243 were polymorphic ones and only 6 bands were found to be mono-morphic. This is indicative of the fact that high degree of polymorphism do exist in the genus *Sesbania*. Jamnadass et al. (2005) observed high level of polymorphism in populations of *S. sesban* from Africa. While making an evaluation of the agromorphological and genetic variability in five species of *Sesbania* collected from India, Philippines and Australia using, Joshi-Saha and Gopalakrishna (2007) analyzed the relationships among and with in populations of different species of the genus and found very high level of polymorphism (93.5%). However, they used only ISSR marker for molecular profiling and did not include the tree species *S. grandiflora*, which belong to a different sub-genus *Agati*. In the present study, both RAPD and ISSR markers have been used in combination and species wild or naturalized in the locality have been studied for genetic diversity.

The phylogenetic trees and similarity values among different species (Figure 2 and Table 4) show clear

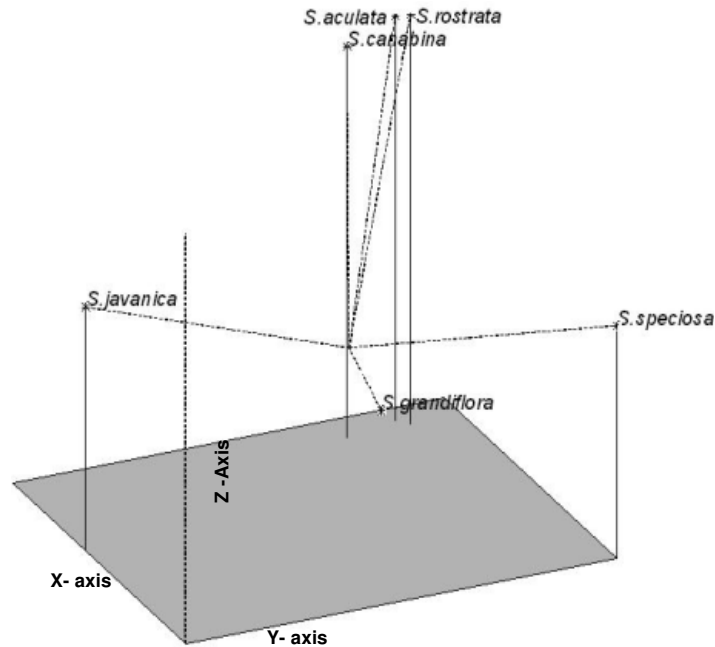


Figure 3. Principal Co-ordinate analysis showing relationship among six species of *Sesbania*.

segregation of *S. grandiflora*, a tree species, from rest of the shrubby or herbaceous taxa. This justifies inclusion of the lone species under the sub-genus *Agati* Desv. (Baker, 1876). Of the other species, *S. javanica* got separated from the other four species. *S. rostrata* and *S. aculeata* were the closest in terms of similarity between them. High boot strap values in the dendrograms shows the accuracy and authenticity of the result, which is supported by the findings of the previous workers like Baker (1876), Bairiganjan et al. (1984) and Veasey et al. (1999). Clustering of all the five species of *Sesbania* other than *S. grandiflora* also justify their classification under the sub-genus *Eusesbania* (Baker, 1876) or sub-genus *Sesbania* as described by Monteiro (1984) and Veasey et al. (1999). The segregation of *S. grandiflora* is supported by the cytotaxonomic study on *Sesbania* by Bairiganjan et al. (1984), who reported the species as a tetraploid with $2n = 24$. From morphological, cytotaxonomical and molecular study, it is treating *S. grandiflora* as a sub-genus of *Sesbania* seems justified.

The high degrees of correlation between ISSR and RAPD (0.922) suggested that any of the markers could be used for the present study. Garcia-Mars et al. (2000) made similar observations using RAPD and AFLP markers in watermelon. Both ISSR and RAPD showed exactly same pattern of clustering of species. The principal coordinate analysis showed placement of all the species in a similar coordinate except *S. grandiflora* and the result was supported by morphological and cytotaxonomical studies described earlier.

This is the first report on genetic diversity assessment in the genus *Sesbania* using both RAPD and ISSR markers

and taking into consideration species from two sub-genera *Agati* and *Eusesbania*/ *Sesbania*. Both the markers were found suitable for characterization of *Sesbania* species and germplasm.

ACKNOWLEDGEMENT

The authors wish to thank the Department of Environment and Forests, Government of Orissa, India for financial support.

REFERENCES

- Acharya L, Mukherjee AK, Panda PC (2004). Genomic relationship among nine species of Millettieae (Leguminosae: Papilionoideae) based on random amplified polymorphic DNA (RAPD). *Z. Naturforsch C*.59: 868-873.
- Bairiganjan GC, Panda PC, Pattnaik SN (1984). Cytotaxonomic studies in *Sesbania* Scop. (Fabaceae) in Orissa. *J. Orissa Bot. Soc.* 6: 22-30.
- Baker JG (1876). Leguminosae. In: Hooker JD (Ed.). *Flora British India*, London, 2: 56-306.
- Bray RA, Palmer B, Ibrahim TM (1997). Performance of shrub legumes at four sites in Indonesia and Australia. *Trop. Grasslands* 31: 31-39.
- Brewbaker JL, Macklin B, Evans DO (1990). The perennial *Sesbanias*. In: Evans DO and Macklin B (Eds.). *Perennial Sesbania Production and Use*. Nitrogen Fixing Tree Association, Waimanalo, pp. 6-12.
- Doyle JJ, Doyle JL (1990). Isolation of plant DNA from fresh tissue. *Focus* 12: 13-15.
- Garcia-Mas J, Oliver M, Gomez-Paniagua H, de Vicente MC (2000). Comparing AFLP, RAPD and RFLP markers for measuring genetic diversity in melon. *Theor. Appl. Genet.* 101: 860-864.
- Ghislain MD, Fazardo ZD, Huaman Z, Hismans RH (1999). Marker assisted sampling of the cultivated Andean Potato (*Solanum tuberosum*) collection using RAPD markers. *Genet. Resour. Crop Evol.* 46: 547-555.

- Jaccard P (1908). Nouvelles recherches sur la distribution florale. Bull. Soc. Vaud. Sci. Nat. 44: 223-270.
- Jamnadas R, Hanson J, Poole J, Hanotte O, Simons TJ, Dawson IK (2005). High differentiation among populations of the woody legume *Sesbania sesban* in sub-Saharan Africa: Implications for conservation and cultivation during germplasm introduction into agroforestry systems. For. Ecol. Manage. 210(1-3): 225-238.
- Joshi-Saha A, Gopalakrishna T (2007). Agromorphological and molecular variability in the genus *Sesbania*. Genet. Resour. Crop Evol. 54: 1727-1736.
- Mabberley DJ (1997). The Plant Book, Cambridge Univ. Press, UK. pp.1-858
- Mantel NA (1967). The detection of disease clustering and a generalized regression approach. Cancer Res. 3: 91-99.
- Monteiro R (1984). Taxonomic studies on Brazilian legumes with forage potential: *Sesbania*, *Lupinus*. Ph. D. Thesis, St. Andrews University, pp. 446.
- Nayak S, Naik PK, Acharya L, Mukherjee AK, Panda PC (2005). Assessment of genetic diversity among 16 promising cultivars of ginger using cytological and molecular markers. Z. Naturforsch C. 60: 485-496.
- Ndoye I, Tomekpe K, Dreyfus B, Dommergues YR (1990). *Sesbania* and *Rhizobium* symbiosis: nodulation and nitrogen fixation. In: Macklin, B and Evans DO (eds.) *Perennial Sesbania Species in Agroforestry Systems*. Nitrogen Fixing Tree Association, Wamanalo, pp. 31-38.
- Rohlf FJ (1997). NTSYS-Pc. Numerical taxonomy and multivariate analysis system version 2.02e. Exeter Software, New York.
- Saraswati R, Matoh T, Sasai T et al. (1993). Identification of *Sesbania* species from electrophoretic patterns of seed proteins. Trop. Agr. 70: 282-285.
- Semagn K, Bjornstad A, Stedje B, Bekell E (2000). Comparison of multivariate methods for the analysis of genetic resources and adaptation in *Phytolacca decandra* using RAPD. Theor. Appl. Genet. 101: 1145-1154.
- Smith JSC, Chin ECL, Shu H, Smith OS, Wall SJ, Senior ML, Mitchell SE, Kresovich S, Ziegler J (1997). An evaluation of the utility of SSR loci as molecular markers in Maize (*Zea mays*): Comparison of data from RFLPs and pedigree. Theor. Appl. Genet. 95: 163-173.
- Sneath PHA, Sokal R (1973). Numerical taxonomy. Freeman, San Francisco, California. pp. 34.
- Veasey EA, Schammas EA, Vencovsky R (1999). Morphological and agronomic characterization and estimates of genetic parameters of *Sesbania* Scop. (Leguminosae) accessions. Genet. Mol. Biol. 22: 81-93.
- Veasey EA, Vencovsky R, Martins PS (2002). Germplasm characterization of *Sesbania* accessions based on isozyme analyses. Genet. Resour. Crop Evol. 49: 449-462.
- Williams JGK, Kubelik AR, Livak KJ, Rafalski JA, Tingey SV (1990). DNA polymorphisms amplified by arbitrary primers are useful as genetic markers. Nucleic Acids Res. 18: 6531-6535.
- Zietkiewicz E, Rafalski A, Lauba D (1994). Primer based microsatellite sequences in plant species. Genomics 20: 176-183.