

Full Length Research Paper

Water supply and demand scenario of Dilla Town, Southern Ethiopia

Mandefro Chala Debela* and Habtamu Kassa Muhye

Department of Water Resources and Irrigation Engineering, Dilla University, Ethiopia.

Received 24 August, 2017; Accepted 27 September, 2017

Access to and use of safe drinking water can contribute enormously to health, productivity and social development. This study was conducted to assess the existing water supply and demand scenario of Dilla Town, Southern Ethiopia. To achieve the objective of the study, a total of 187 households were randomly selected and interviewed by using semi structured questionnaire. To collect the required data, interview schedule, observation, focus group discussions and key informant interviews were used. In addition, different documents were reviewed. The collected data were analyzed using descriptive statistics. The survey result revealed that the town water supply cannot fulfill consumer demand for water. Obsolete supply system, electric power supply problem, lack of institutional capacity and budget shortage are the basic factors for this imbalance. According to the survey results, the average per capita consumption was found to be less than the recommended standard, which is approximately at least 20 L of water per person per day. In line with this, the most frequent complaints by water customers were regular interruption of water supply and unfair water distribution. The collected data also showed that there is prolonged water shortage in the town. Consequently, in order to narrow the supply and demand gap, expansion of water supply services that match with the town development must be carried out, the town water supply service enterprise should devise a mechanism so as to assure the equitable distribution of water among the residents and the concerned stakeholders should discharge their respective responsibilities properly.

Key words: Dilla town, water distribution, drinking water, supply and demand gap.

INTRODUCTION

Many countries in both the developed and developing world face significant problems in maintaining reliable water supplies and this is expected to continue in future years due in part to the impacts of global climate change. Growing populations will further increase the demand for

water, with limited cost-effective water supply augmentation options (Dharmaratna and Harris, 2010).

No other single intervention is more likely to have a significant impact on global poverty than the provision of safe water. Water is a central theme which can be used

*Corresponding author. E-mail: mande2000@gmail.com.

to achieve millennium development goals (MDGs) (Schuster-Wallace et al., 2008). As reported by Helena (2010), the current challenges facing the water supply sector includes keeping pace with net population growth, closing the coverage and service gap and ensuring sustainability of existing and new services with improved quality of services.

A good water supply system should fulfill two primary requirements, viz; adequacy and reliability. Budget constraints, low revenues and shortfalls in operation and maintenance have resulted in insufficient expansion of the system and gradual degradation of the service; at the same time the water demands increased and scarcity worsened (Hickey, 2008). According to World Health Organization, 75 L of drinking water per day is necessary to be able to prevent household disease and also 50 L a day for basic parent's sanitation (Abaje et al., 2009).

Currently, majority of the existing Ethiopian urban water supply and sanitation system designs are obsolete but the rate of rehabilitation and expansion has been lagging behind. Most urban water utilities do not fulfill the principle of cost recovery and self-reliance, which has undermined the interests of the external borrowers. On the other hand, contrary to its huge investment requirement of urban water supply, the flow of funds has remained very low (Ministry of Finance and Economic Development - MoFED, 2007). Estimate reveals that about 52% of the population in Ethiopia traveled half an hour or more to collect water every day (Central Statistical Agency - CSA, 2006). This long travel distance to the nearest water source directly affects women and children who are mainly responsible for fetching water. Most girls and children find it too difficult to attend and succeed in school because a considerable amount of their time is used for domestic chores including fetching water. This has an implication on the productivity of women.

According to the report of Ministry of Health and Water and Energy, access to safe drinking water increased from 23.1% in 1998 to 68.5% in 2012. However, millions of people in urban and rural areas have not been getting safe drinking water from an improved water source. In the case of Southern Nation, Nationalities and Peoples' Regional State (SNNPR_S), clean water supply access in terms of coverage has reached 53.9% (BoWRD, 2008). According to Edward (2010), major problems of water supply in urban centers of Ethiopia include low production levels, inadequate distribution systems and leakages in many areas.

The administrative center of Gedeo zone, Dilla town, is growing rapidly in recent years as a result of increased trade and being a major transit center, main passage of goods from Kenya. On the other hand, the provision of urban water is clearly observed as a critical challenge in the town. Therefore, these conditions necessitated a research work in order to assess the existing water supply and demand status of the town.

METHODS

Study site description

Dilla town is located in Southern Ethiopia at a distance of 359 km from the capital city, Addis Ababa, on the way from Addis Ababa to Moyale. It is located at 6° 22' to 6° 42' N and 38° 21' to 38° 41' E longitude with an altitude of about 1476 m.a.s.l (Figure 1). The mean annual daily maximum and minimum air temperature is 28.4 and 12.8°C, respectively (Demelash, 2010). According to the Ethiopian Central Statistical Agency, the town has a total population of 86,069 out of which 45,207 are males and 40,862 are females. However, Dilla Town Administration Population Affairs, Coordination and Implementation Core Work Process (DTAPA) reported that the projected population of the town is estimated to be above one hundred thousand (Dilla Town Administration Population Affairs - DTAPA, 2016).

The town is bounded by Legedara, Walame and Chichu Rivers. Presently, the town is supplied with water by two different water sources. The first one is Legedara River and the other one is ground water from which six boreholes are developed. The data obtained from Dilla Town Water Supply Service Enterprise (DTWSSE) showed that the production capacities of the boreholes are 13.5 l/s (Millennium), 5 l/s (Chichu number 1), 6 l/s (Chichu number 2) with the three new ones producing 8 l/s each. In addition, there are 36 public stand pipes in the different parts of the town that supply water for those households that do not have access to piped connections (DTWSSE, 2016).

Data source and method of data collection

The survey utilized both quantitative and qualitative methods to explain concepts and measures to demonstrate implications of the issue under question. Primary data was collected from respondents using questionnaires and personal field observation was employed to supplement respondents' response. Secondary data was collected from related literatures. Structured and semi structured questionnaire were prepared for the survey. The questionnaire included an introductory part, questions on the characteristics of the respondents, water sources and accessibility, potable water coverage and water supply satisfaction. Data collection was undertaken by both the researcher and enumerators.

Sample size and sampling method

In order to determine the sample size that represents the population, a mathematical formula suggested by Fink and Kosecoff (1995) was employed as presented:

$$N = \frac{z^2 pq}{d^2} \quad (1)$$

Where N = Sample size;

Z = 95% confidence level corresponds to the value 1.96;

p = 0.61 (the 2015 water supply coverage of the town);

q = 1-p;

d = proportion of sampling error tolerated at 0.07.

Therefore, 187 households were taken as sample respondents. Since the town is classified into three sub cities, sample households were randomly selected from the three sub-cities purposively based on their population number.

Data analysis and presentation

Qualitative data was analyzed and presented through description,

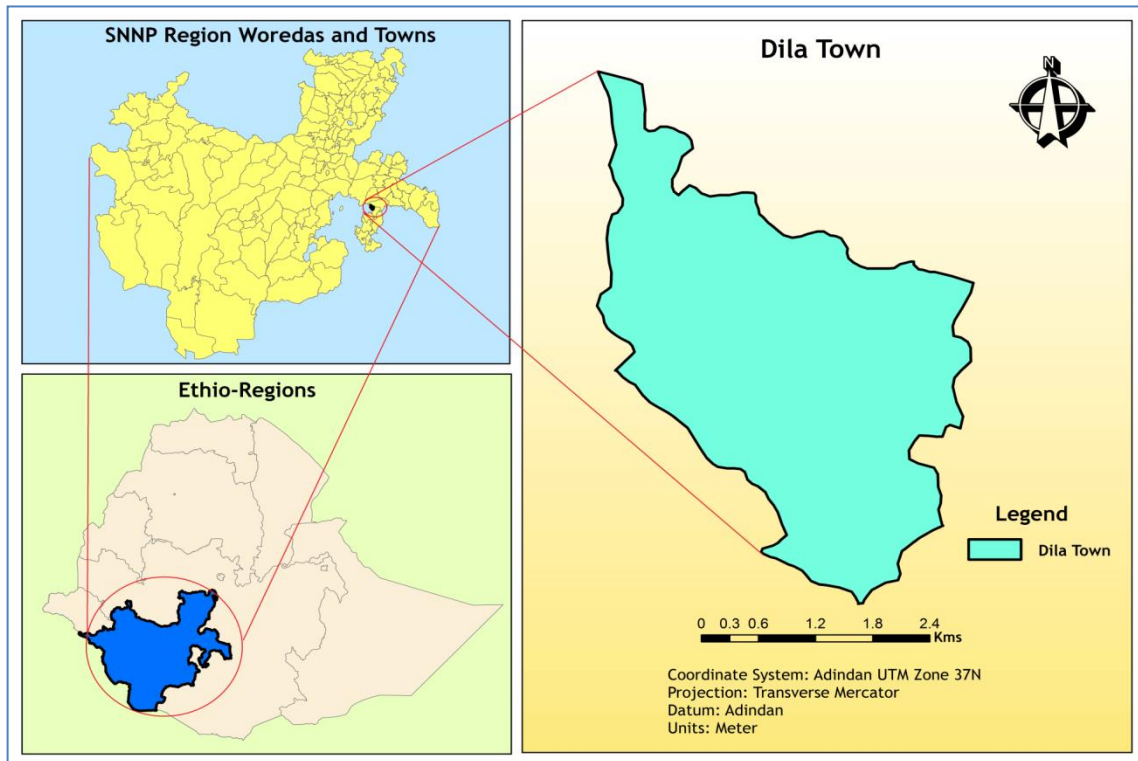


Figure 1. Location of the study area.

narration and interpretation of the situations contextually. Whereas quantitative data were analyzed and presented using tables, frequency and percentages were used to give clear understanding of the issue quantitatively. The computer software applications SPSS (Statistical Program for Social Science) and Micro soft Excel were used to analyze the data.

RESULTS AND DISCUSSION

Characteristics of survey respondents

As depicted in Table 1, out of 187 interviewed sample households, 60% were female and the rest are male. The age range distribution of the respondents showed that 18% of them were in 20 to 30 age groups, 31% were in 31 to 40 age groups and the remaining were above 41. With regards to marital status, 68% were married, 2% were divorced and the rest were unmarried. Concerning the educational level of the respondents, 2% were illiterate, 76% had formal education and 22% had informal education.

Status of drinking water supply

Water sources and accessibility

Safe drinking water is the birthright of all humankind (as

Table 1. Sample households' characteristics.

Item category	Variables	Frequency	Percent
Sex	Female	112	60
	Male	75	40
Age	20-30	33	18
	31-40	58	31
	>41	96	51
Marital status	Married	128	68
	Divorced	4	2
	Unmarried	55	29
Educational level	Literate/formal	142	76
	Illiterate	3	2
	Informal	42	22

Source: Sample survey (2015).

much a birthright as clean air) (Rao, 2002), while access to clean water can be considered one of the basic needs and rights of a human being. The two main water sources of Dilla town are river and ground water. Legedara River is diverted to a treatment plant and distributed to urban residents through a piped system. The non-piped system

Table 2. Water supply connection (Sample survey, 2015).

Description	Variable	Frequency	Percent
Primary water source for the household	Pipeline connection	92	49
	Public tap	73	39
	Water vendors	22	12
Distance from the water source to residence (m)	Up to 10	7	4
	10-50	13	7
	50-100	26	14
	100-200	43	23
	>200	97	52
Average time spent to collect water (min)	<5	24	13
	5-30	73	39
	>30	90	48
How much water do you use on average per person per day in liter	<20	125	67
	20-30	56	30
	30-50	6	3

includes rivers and hand dug wells. With regard to water accessibility, distance and time traveled to fetch water are considered. To most communities of Africa, long distance travel to fetch water is common. According to World Health Organization (WHO, 2006), only 16% of people in sub Saharan Africa had access to drinking water through a household connection (an indoor tap or a tap in the yard).

Out of the total interviewed sample households, 49% obtained water from private tap connection regardless of its frequency, 39% used water from public tap and the remaining got water from water vendors. The survey result revealed that majority of the respondents (52%) travelled more than 200 m to collect water from public tap. Some of them (4%) reported distances up to 10 m, 7% from 10 to 50 m, and 14% from 50 to 100 m while the remaining (23%) reported distances from 100 to 200 m from their residence. Similarly, majority of the respondents (48%) spent more than 30 min to collect drinking water, 13% of them < 5 min, the rest 39% spent from 5 to 30 min (Table 2). An estimate reveals that about 52% of Ethiopian population traveled half an hour or more to collect water every day (CSA, 2006).

Regarding the per capita water requirement, majority (67%) of the respondents reported that they use less than 20 L of water per capita per day which is less than the recommended standard. African Water Development Report (2006) estimated that to ensure the basic water needs of humans, 20 to 50 L of water free from harmful contaminants are needed every day. According to Ministry of Water, Irrigation and Energy (MoWIE) (2011), basic access of water for urban dweller is 20 L per capita per day within 0.5 km service radius in universal access

plan. On the other hand, as per WHO (2008), the basic access of water is 20 L per capita per day within 100 m to 1 km and the average time spent to collect water is 5 to 30 min. More than 1 km of traveling distant in search of water is said to be no access. Thus, majority of households did not have basic access of water for their domestic needs. It implies that water accessibility standards are not well exercised in the town.

Bartram and Howard (2003) underlined that adequate and reliable water supply is critical for coping with every day urban life. Poor access to potable water has negative impact on development. Challa (2011) also indicated that, poor access to water supply and sanitation limits opportunities to escape poverty and exacerbates the problems of vulnerable and marginalized groups. As depicted in Figure 2, the towns' residences use donkey carts and yellow plastic jars 'Jerikans' to fetch water from long distances and some organizations and hotels also use lorries to meet their water demand from public taps.

Potable water coverage

The WHO/UNICEF JMP report of 2015 indicated that the improved water coverage in Ethiopia was found to be 93 and 49% in urban and rural areas, respectively. The country coverage of improved water source usage reached 57%. On the other hand, 30% of the total Ethiopian citizens rely on unimproved drinking water sources. In 2015, the potable water coverage of Dilla Town was reported to be 61% (DTWSSE, 2016). Water supply systems in urban areas are often unable to meet existing demands and are not available to everyone,



Figure 2. Fetching water from public taps (2015).

rather some consumers take disproportionate amounts of water and the poor is the first victim of the problem (Bereket, 2006).

The total numbers of potable water customers of Dilla town are 7001 out of which 6596 are private customers and 19 and 194 are commercial and government customers, respectively. There are two jails in the town. As reported by the key informant, there is chronic water shortage in the jail and as a result they complement their water need from ground and river water. As depicted in Table 3, the piped water coverage increment is very small as compared to the population growth. As reported by DTWSSE, financial constraint and poor management of the existing water supply are the main challenges for the low coverage of the water supply.

Some of the respondents also reported that due to water shortage they incur additional costs and face health problems like diarrhea as they are forced to use alternative sources of water of poor quality. Hunter et al. (2010) reported that a poor water supply impacts human health by causing diarrhea and non-diarrheal disease, limiting productivity and the maintenance of personal hygiene.

According to WHO and UNICEF (2013), there is a considerable funding gap to achieve full coverage; hence, more has to be invested in developing sector capacity through strengthening institutional structures especially at regional, district and community levels. Based on Schuster-Wallace et al. (2008), water has suffered from severe under financing. This result from inadequate

Table 3. Dilla town 5 years water coverage.

Description	2011	2012	2013	2014	2015
Total population	73,361	78,360	82,127	86,071	91,029
Population served with potable water	22,505	25,005	27,505	30,505	32,505
Potable water coverage (%)	30.7	31.9	33.5	35.44	35.7

Source: DTAPA and DTWSSE (2016).

Table 4. Drinking water supply service situation.

Items	Variables	Frequency	Percent
Are you satisfied in the current water supply of the town?	Yes	7	4
	No	180	96
How often do you get water for your consumption?	Once in 1-2 days	6	3
	Once in 3-4 days	22	12
	Once in 4-5 days	26	14
	Once in a week	60	32
	More than 1 week	73	39
Is there fair water distribution.	Yes	13	7
	No	174	93

Source: Field Survey (2015).

internal financial capacity in the poor countries to achieve water goals, poor political decisions for allocation of development aid, an overall reduction over time in development aid, and the limited cost recovery potential in poverty stricken regions.

Evidence from empirical research (Vasquez et al., 2009) indicates that improved water supply schemes in many developing countries are not functioning properly. There have been similar studies carried out in some of Ethiopian towns. Generally, the studies revealed that the water demand is more than the supply. For instance, Tizazu (2012) at Yirgalem town showed that, water supply service could not meet water demands of the town with existing capacity. Challa (2011) and Reda (2012) reported that there is low water coverage and frequent interruption. To expand water supply to urban areas, implementing proper demand management strategies is required. Pertinent information on the residential water demand of households is necessary to properly assess the factors that affect residential water demand (Arbués et al., 2003).

Water supply satisfaction

Most countries give first priority to satisfaction of basic human needs for water. The service deficiencies primarily affect the poorest segments of the population in

developing countries. This survey result showed that out of the total respondents, about 96% are dissatisfied with the current service due to frequent interruption and unfair distribution of water whereas the rest reported that they are satisfied with the services. Of the total interviewed respondents, 39% obtained tap water once a week. In some cases, the water may not be available for two weeks and even more (Table 4). The interruption is attributed to malfunction of submersible pumps and power supply interruption. While expanding improved water source schemes is generally essential, it is equally important to ensure that the schemes have increased users' satisfaction with water quality and availability for everyday use (UNICEF, 2010). The majority of the sample households replied that the water distribution is unfair and variable. As reported by respondents, some area may be served water frequently while other areas stay without water service at all. Consequently, the town water supply service enterprise should devise a mechanism so as to minimize the inequitable distribution of water among the residents of the town.

Conclusions

This study has attempted to examine the water supply and demand scenario of Dilla Town. The water demand of the town is increasing due to urbanization and

population growth. The survey revealed that the town water supply cannot fulfill consumer demand for water. Long age of the system, electric power supply problem, lack of institutional capacity, lack of finance and malfunction of submersible pumps are the basic limitations.

The average per capita consumption was found to be less than 20 L/person/day which is less than the recommended standard. In line with this, according to the survey results, the most frequent complaints by water customers are regular interruption of water supply and unfair water distribution. The findings of the data lead to the conclusion that there is a huge gap between the water supply and demand of the town. Consequently, in order to satisfy the water demand of the town the following measures should be taken.

- 1) Expansion activities that match with the town development must be carried out to meet the water requirements of the town.
- 2) The concerned stakeholders (DTWSSE, Gedio Zone Water and Irrigation Office, Electric and Power Authority, Dilla branch) should discharge their respective responsibility properly.
- 3) DTWSSE should devise a mechanism so as to minimize the inequitable distribution of water among the residents of the town.
- 4) Additional study should be conducted to find out other possible causes for water shortage so as to act accordingly.

CONFLICT OF INTERESTS

The authors have not declared any conflict of interests.

REFERENCES

- Abaje IB, Ati OF, Ishaya S (2009). Nature of potable water supply and demand in Jema'alocal government area of Kaduna State, Nigeria. *Res. J. Environ. Earth Sci.* 1(1):16-21.
- African Water Development Report (AWDR) 2006. UN Water/Africa Economic Commission for Africa unwaterafrica.uneca.org. Assessed on Nov, 2016.
- Arbués F, Garcia-Valinas M, Martinez-Espineira R (2003). Estimation of residential water demand: a state-of-the-art review. *J. Socio Econ.* 32(3):81-102.
- Bartram J, Howard G (2003). *Drinking-Water Standards for the Developing World*. Department of Protection for the Human Environment, World Health Organization.
- Bereket B (2006). Evaluation of water supply systems in selected urban poor areas of Addis Ababa. MSc. thesis. UNESCO-IHE Institute for Water Education, Delft. The Netherlands. 135p.
- BoWRD (2008). *Water Resources Development Bureau of SNNPRS Annual Report*. Hawassa.
- Central Statistical Agency (CSA) (2006). *Ethiopia Demographic and Health Survey*. Addis Ababa, Ethiopia.
- Challa D (2011). An assessment of urban water supply and sanitation, the case of ambo town. Addis Ababa, Ethiopia.
- Demelash W (2010). *Characterization and Classification of the Soils of Upper Sala Watershed in Dilla Zuria District of Gedeo Zone, Southern Ethiopia*. MSc Thesis, Haramaya University, Haramaya, Ethiopia.
- Dharmaratna D, Harris E (2010). *Estimating Residential Water Demand Using the Stone-Geary Functional Form: The case of Sri Lanka*.
- DTAPA (2016). *Dilla town administration population affairs, coordination and implementation core work process*. Dilla, Ethiopia. Unpublished.
- DTWSSE (2016). *Dilla Town Water Supply Service Enterprise*. Dilla, Ethiopia. Unpublished.
- Edward S (2010). *Ethiopian environment review No. 1 Forum for Environment, Addis Ababa*. Sue ed.
- Fink A, Kosecoff J (1995). *How to Conduct Surveys: A Step by Step Guide*. Thousand Oaks, Calif: Sage Publications.
- Helena AJ (2010). *Performance Indicators of Urban Water Supply Service (2nd edition)*. IWA Publishing.
- Hickey H (2008). *Water supply systems and evaluation methods*. Volume I.
- Hunter PR, Mac Donald AM, Carter RC (2010). *Water Supply and Health*. *PLoS Med.* 7(11): e1000361.
- Ministry of Water, Irrigation and Energy (MoWIE) (2011). *Ministry of Water and Energy in Cooperation with Ministry of Health, Summary of Universal Access Plan in Four Parts*. Addis Ababa.
- MoFED (Ministry of Finance and Economic Development) (2007). *Building on Progress: A Plan for Accelerated and Sustained Development to End Poverty (PASDEP), Annual Progress Report 2006/2007*. Addis Ababa, Ethiopia: MoFED.
- Rao R (2002). *Safe Drinking Water; the need, the problem, solutions and an action plan*. Report of the Third World Academy of Sciences, Italy. P.8.
- Reda R (2012). *Performance Evaluation and future demand Assessments of water supply system and sanitation*. 1-2.
- Schuster-Wallace CJ, Grover ZA, Confalonieri U (2008). *Safe Water as the Key to Global Health*. United Nations University International Network on Water, Environment and Health (UNU-INWEH). Ontario Canada.
- Tizazu T (2012). *Technical evaluation of Yirgalem water supply system SNNPR*. abstract.
- United Nations Children's Fund (UNICEF) (2010). *Meeting MDG drinking water and Sanitation Target*. Rapid assessment Report. Geneva, Switzerland.
- United Nations Children's Fund (UNICEF) and World Health Organization (WHO)(2015). *Progress on sanitation and drinking water update and MDG assessment*. World Health Organization, Geneva.
- Vasquez W, Mozumder P, Hernandez-Arce, Berrens R (2009). *Willingness to pay for safe drinking water: Evidence from Parral, Mexico*. *J. Environ. Manag.* 90(11):3390-3400.
- World Health Organization (WHO) (2006). *Meeting the MDG drinking water and sanitation target: the urban and rural challenge of the decade*. Retrieved from http://www.who.int/water_sanitation_health/monitoring/jmpfinal.pdf. Nov, 2016.
- World Health Organization (WHO) (2008). *Guidelines for drinking water quality (3rd edition ed., Vol. I)*. World Health Organization: Geneva.
- World Health Organization (WHO) and United Nations Children's Fund (UNICEF) (2013). *Progress on Sanitation and Drinking Water 2013 Update*. WHO/UNICEF Joint Monitoring Program for Water Supply and Sanitation (www.wssinfo.org) Assessed on Dec. 2016.