

Full Length Research Paper

Wireless attendance management system based on iris recognition

Seifedine Kadry* and Mohamad Smali

Faculty of Science, Lebanese University, Lebanon.

Accepted 24 May, 2010

Iris recognition verification is one of the most reliable personal identification methods in Biometrics. With the rapid development of iris recognition verification, a number of its applications have been proposed until now including time attendance system etc. In this paper, a wireless iris recognition attendance management system is designed and implemented using Daugman's algorithm (Daugman, 2003). This system based biometrics and wireless technique solves the problem of spurious attendance and the trouble of laying the corresponding network. It can make the users' attendances more easily and effectively.

Key words: Iris recognition verification, personal identification, biometrics, attendance management, wireless.

INTRODUCTION

While the move towards the digital era is being accelerated every hour, biometrics technologies have begun to affect people's daily life more and more. Biometrics technologies verify identity through characteristics such as fingerprints, faces, irises, retinal patterns, palm prints, voice, hand-written signatures, and so on. These techniques, which use physical data, are receiving attention as a personal authentication method that is more convenient than conventional methods such as a password or ID cards. Biometric personal authentication uses data taken from measurements. Such data is unique to the individual and remains so throughout one's life. This technology has been applied for controlling access to high-security facilities, but it is now being widespread developed in information systems such as network, e-commerce, and retail applications. In these technologies, iris recognition becomes the most mature and popular biometrics technology used in automatic personal identification.

In the beginning, the idea of using iris patterns for

personal identification was originally proposed in 1936 by ophthalmologist Frank Burch. By the 1980's the idea had appeared in James Bond films, but it still remained science fiction and conjecture. In 1987 two other ophthalmologists, Aran Safir and Leonard Flom, patented this idea, and in 1989 they asked John Daugman to try to create actual algorithms for iris recognition. But now, this technology is also being used in several other applications such as access control for high security installations, credit card usage verification, and employee identification (Medien and Burghardt, 2002). The reason for the popularity of iris recognition verifying is the uniqueness, stability, permanency and easily taking. Just for this, a number of iris recognition verification approaches have been proposed until now (Zhang and Jain, 2004; Daugman, 1994). This paper proposes a design and implementation of a wireless iris recognition attendance management system. This system is an application of the iris recognition verifying and RF wireless techniques and it is mainly used for employee identification. Through practices, this system is proved to be easy-to-use and effectively. And this paper is organized as follows: In the first section, we introduce the attendance management system with different types. Section 2 describes the technological requirements for

*Corresponding author. E-mail: skadry@gmail.com. Tel: 009613700512.

this system design. Section 3 outlines the functions of this system briefly and describes the hardware and software design of this system. Section 4 introduces some key problems in the implement of this system and finally Section 5 contains conclusions and future research plan.

ATTENDANCE MANAGEMENT SYSTEM

Attendance Management System is the easiest way to keep track of attendance for community organizations such as school clubs, scouting units, church groups, athletics, or volunteer groups.

Attendance Management System covers the requirements of the Personnel Department in terms of Manpower Analysis, day-to-day monitoring of the Attendance, Maintaining Statutory Registers, Monitoring of Leave Records, Calculation of Overtime and transfer of relevant information to the Payroll System. We can classify the attendance management system to four classes:

1. Simple systems: card based. The use of the attendance card is not new. Widely popular for many years now, OTR cards or punch cards have been used for clocking in working hours. These are paper cards that are inserted in a machine which will then record the exact time when the employee has arrived. The paper cards have eventually been replaced by sturdier cards that are sized just like the bank card or ID. In fact, some ID cards issued by companies can also be used for time keeping and are inserted into digital time recorders. An issue with the attendance card is that some workers will actually ask co-workers to time in for them. Some have attempted to remedy this dilemma through the use of signature logs that are attached next to the attendance recorder.
2. Large-scale companies: Attendance fingerprint. If you want something that is more precise and unlikely to be tampered with by the naughty employee, the fingerprint based attendance system is the choice for you. These systems make use of fingerprint readers, or little glass panels attached to the attendance machine. The employees will simply put their fingerprints on the reader which will then scan the print and identify the employee. The fingerprint readers will then automatically log in the employee on an electronic database.
3. There are other variants to the fingerprint reader, such as the iris scanner. Like the fingerprint, no two people have the same eyes. A scanner will scan the eyes and automatically log the employee in. keep in mind, however, that these high technology systems are much more expensive than the usual card reader. You will also need to create a fingerprint or iris database from all of your employees so that the scanners will be able to make comparisons. The theoretical study and the experiments show that the Iris recognition mechanism is the most

accurate and reliable recognition system, for this reason our article is based on iris recognition (Harper, 2003).

4. E-Commerce: performance based systems. Finally, there is performance based attendance keeping systems. These are increasingly being utilized to ensure not only employee attendance, but their productivity and efficiency as well. an example are the computer companies and online companies that will log in the employee based on factors such as when the employee logs in to the company web site or computer, and other activities such as mouse clicks, and keyboard taps. This is still in the experimental phase, however, but is widely being studied by many companies. One major limitation, however, is that these attendance keeping systems will not work for companies and business that do not require the employees to make high use of the computer.

Today, biometric recognition is a common and reliable way to authenticate the identity of a living person based on physiological or behavioral characteristics. A physiological characteristic is relatively stable physical characteristics, such as fingerprint, iris pattern, facial feature, hand silhouette, etc. This kind of measurement is basically unchanging and unalterable without significant duress. A behavioral characteristic is more a reflection of an individual's psychological makeup as signature, speech pattern, or how one types at a keyboard. The degree of intra-personal variation in a physical characteristic is smaller than a behavioral characteristic. For examples, a signature is influenced by both controllable actions and less psychological factors, and speech pattern is influenced by current emotional state, whereas fingerprint template is independent. Nevertheless all physiology-based biometrics does not offer satisfactory recognition rates (false acceptance and/or false reject rates, respectively referenced as FAR and FRR). The automated personal identity authentication systems based on iris recognition are reputed to be the most reliable among all biometric methods: We consider that the probability of finding two people with identical iris pattern is almost zero (Belganoui et al., 2000). That is why iris recognition technology is becoming an important biometric solution for people identification in access control as networked access to computer application (Gifford et al., 1999).

Compared to fingerprint, iris is protected from the external environment behind the cornea and the eyelid. No subject to deleterious effects of aging, the small-scale radial features of the iris remain stable and fixed from about one year of age throughout life. A number of groups have explored iris recognition algorithms and some systems have already been implemented and put into commercial practice by companies such as Iridian Technologies, Inc., whosesystem is based on the use of Daugman's algorithm (Daugman, 1993).

A typical iris recognition system generally consists of

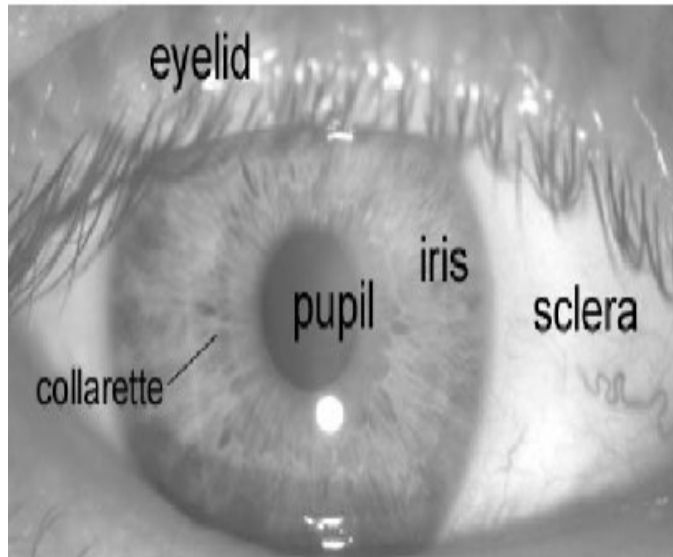
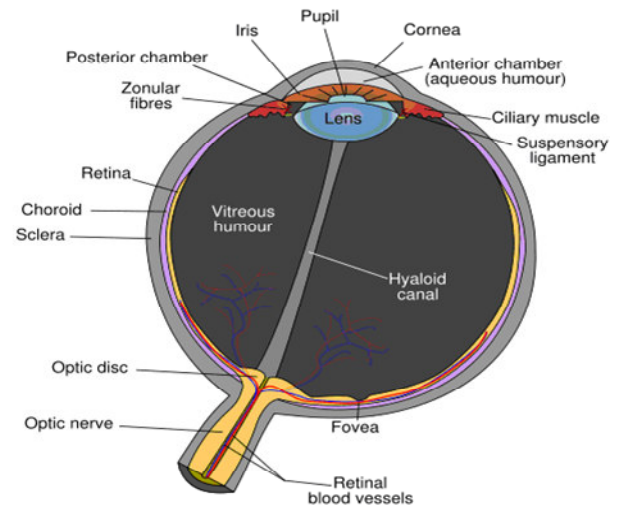


Figure 1. Anatomy of a frontal image of the eye (Wolf, 1976).



the following basic modules:

- I. Image acquisition, iris location, and pre-processing,
- II. Iris texture feature extraction and signature encoding, and
- III. Iris signature matching for recognition or verification.

'P.S.: The iris is a muscle within the eye that regulates the size of the pupil, controlling the amount of light that enters the eye. It is the colored portion of the eye with coloring based on the amount of melatonin pigment within the muscle' (Figure 1).

REQUIREMENTS FOR SYSTEM DESIGN

Authentication using iris recognition

Canonical and scientific modern company management system is the requirement for creating a cost-effective, rapid developing corporation. And attendance management is an important part of corporation management system. It can be in contact with salary of employee, work efficiency of corporation and even affects business image of company and staff morale. So the problem of reasonably, effectively and scientifically managing of staff attendances has become all companies facing issue. Traditional styles of attendance management include hand-written signatures, card bell, magnetic card, IC card and RF card attendance machines. These styles cannot avoid replace checking out just because people can be separated from cards.

The great advantage of the authentication using iris recognition is the irreplaceable nature. Through the

analysis of the overall and local characteristics of iris recognition such as eyelid, sclera, pupil, we can extract enough detail data. Such data is unique to the individual and remains so throughout one's life (Medien and Burghardt, 2002). We can use these data to identify or verify a person operating as follows: (1) A digital image of one person's eyes to be verified is captured;(2) A feature extracting algorithm is carried out;(3) Minutiae are extracted and stored as a template for verifying later;(4) People to be verified place his eye on the iris recognition sensor so as to extracting the minutiae from the captured image;(5) A matching algorithm is applied to matches the minutiae with the stored template previously (Miyazawa et al., 2006; Kumar et al., 2003). The overall block diagram of the iris recognition verifying is shown in Figure 2.

Transmission using wireless technique

There are mainly two kinds of iris recognition attendance management system on the market. One is on-line iris recognition attendance management system and the other is off-line iris recognition attendance management system. On-line system always needs to connect with a PC or workstation and all the iris recognition templates of people to be verified must stored in the database in the PC or workstation. Thereby, matching iris recognition needs the support of the background PC. This kind of attendance management system is easy to paralyse in case of malfunctions of iris recognition attendance machines, transmission line or PC. Once several systems connect to form a network, burden of PC and the response time of the system will be added.

On the contraries, an off-line iris recognition attendance

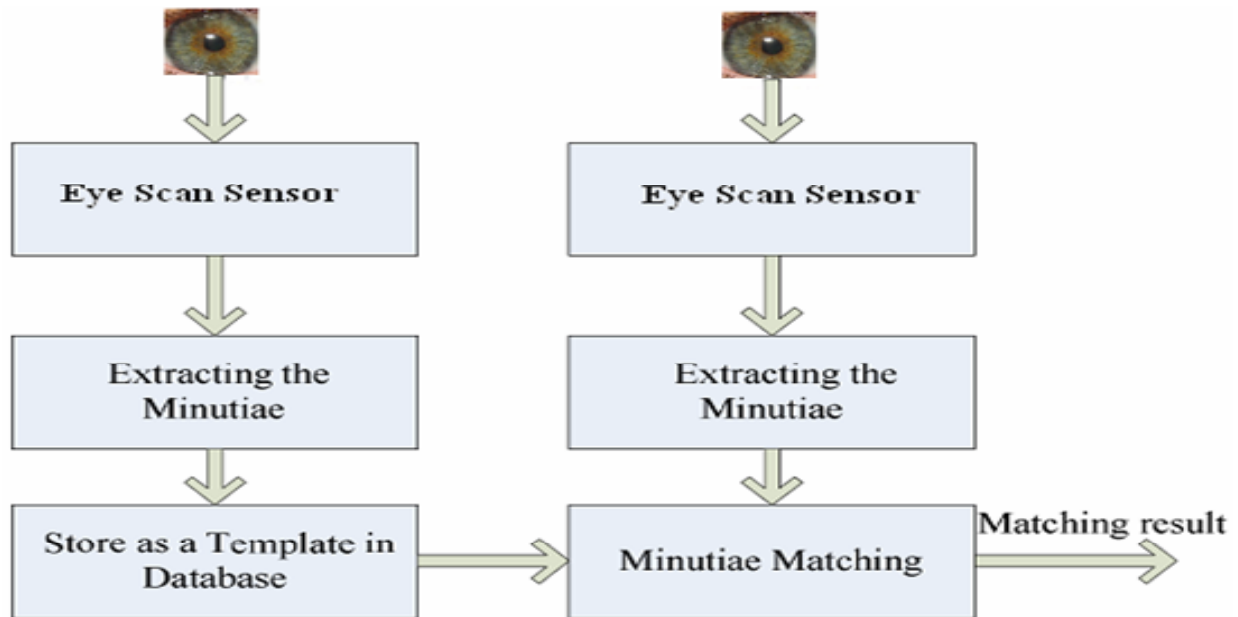


Figure 2. Iris recognition verifying process.

management system can finish all the process including capturing the image of iris recognition, extracting minutiae, storing and matching. All the operating of matching iris recognition needs no support of PC and the burden of PC is lightened. The same systems can connect to form a 485 network and finally connect to the center PC of management system. So off-line systems are widely used in many occasions. The shortcomings of this system are that there must be a managing PC nearby and it is difficult to lay the transmission lines where topography is bad. With the development of wireless techniques such as RFID, GPS, Wi-Fi, Bluetooth etc, many companies manufacture wireless modules. So we can adopt the wireless techniques to solve the above-mentioned questions.

FUNCTIONS AND COMPOSING OF THE SYSTEM

Nowadays, bulk of automatic iris recognition system is constantly smaller. Complex iris recognition verifying algorithms can be solidified in a small embedded processing module. This module and iris recognition sensor as well as external control interface constitute embedded iris recognition verifying system. This wireless iris recognition attendance management system is designed and realized based on automatic iris recognition module and RF wireless module. The basic functions of this system include:

- (1) Take the task of users' attendances.
- (2) transmit the information of attendances to the

managing PC;

- (3) As a terminal of information, display useful information transmitted by PC on LCD.

Hardware design

The hardware part of wireless iris recognition attendance management system is mostly made up of iris recognition verifying module, microcontroller, power module, wireless communication module, real-time clock module, keyboard module and LCD display module. Figure 3 shows the architecture of hardware design.

CPU and iris recognition

Iris recognition verifying module, microcontroller and RF wireless communication module are the core of the system. Hardware design is taking microcontroller (CPU) as center. We choose AT89C5122 as the microcontroller of the system which is a high-performance CMOS derivative of the 80C51 8 bit microcontrollers produced by Atmel Corporation. This chip not only has keyboard interrupt interface, UART, hardware watchdog and enough large RAM, Flash RAM, I/O ports but also has a self powered USB port. So it is fit for the embedded application systems well. Iris recognition verifying module is composed of iris recognition processing module and iris recognition sensor. In Figure 4, iris recognition processing module is showed in broken line frame.

Iris recognition processing module communicates with

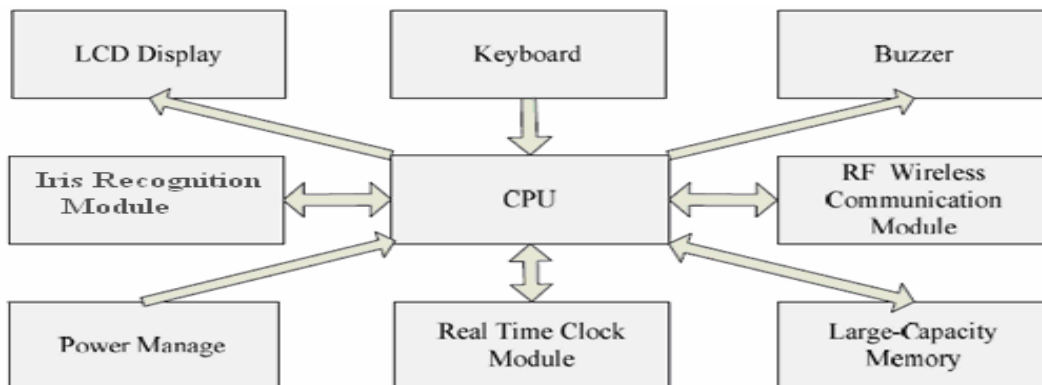


Figure 3. Architecture of hardware design.

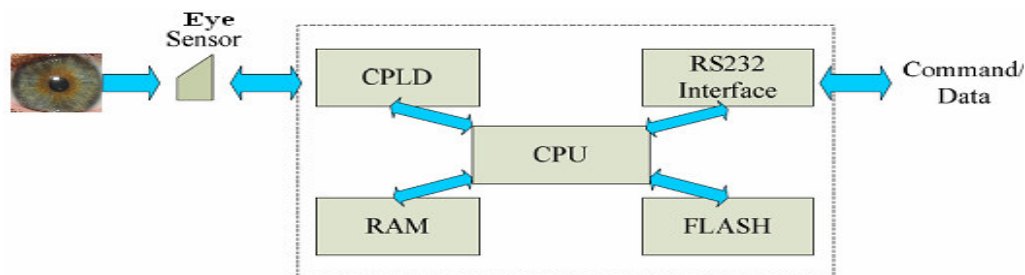


Figure 4. Iris recognition processing module.

Table 1. Format of communicating data packet.

1(Byte)	1(Byte)	2(Byte)	2(Byte)	2(Byte)	2(Byte)	1(Byte)	1(Byte)
0	command	P1	P2	Lw-extra data	Lw-extra data	Error code	Check sum

microcontroller module using RS232 interface in the form of transmitting and receiving data packet (SecuGen, 2001). We define the format (Table 1) of 12 bytes data packet as:

Data packet is divided into two categories: Command Packet and Response Packet. Command packet which needs to be set command byte, p1 (parameter 1) and p2 (parameter 2) bytes is transmitted to iris recognition verifying module by microcontroller. Iris recognition verifying module works under the command packet and responses the Response packet which has the same command byte but has the extra data in the seventh to tenth bytes and error code. Error code and check sum bytes can be used to check on the operations of iris recognition verifying module. There are basically five operations for iris recognition verifying module: (1) Registering iris; (2) Modifying iris; (3) Deleting iris; (4) Verifying iris; (5) Identifying iris. For example, command

packet and response packet of registering a user's iris are seen in Table 2.

Wireless communication module design

As an embedded system, we need wireless module which has low power dissipation, longer transmission distance, better anti-disturbing capability and small package. We choose PTR2000+ (PTR, 2000) wireless module as wireless communication module which is based on nRF401 chip. This module is designed to operate in the 433MHz ISM (Industrial, Scientific and Medical) frequency band and it features Frequency Shift Keying (FSK) modulation and demodulation capability (Weisman, 2003). It operates at bit rates up to 20 k bit/s, effective transmission distance over 1000 m and needs a few external components fully meeting the needs of the

Table 2. Registering a user's iris recognition.

I_R_REGISTER_START	Command Packet
0x00 0x50 ID 0 0 0 0x00 Chk	
I_R_REGISTER_START	Command Packet
0x00 0x50 0 0 0 0 0x00 Chk	
I_R_REGISTER_END	Command Packet
0x00 0x51 ID 0 0 0 0x00 Chk	
I_R_REGISTER_END	Response Packet
0x00 0x51 0 0 0 0 0x00 Chk	

system. Data input pin (DI) and data output pin (DO) of PTR2000+ can be connected to TXD, RXD of UART of AT89C5122 directly. To control the PTR2000+ to receive or transmit, TXEN pin is connected to one I/O pin of AT89C5122. TXEN=1 selects transmit mode and TXEN=0 selects receive mode. CPU communicates information with PTR2000+ module by UART and controls PTR2000+ to transmit information such as attending records and system log. Also there is receiving terminal of PTR2000+ near the managing PC. The voltage converter IC (MAX232) is needed to convert TTL level to RS-232 electrical level when PTR2000+ is connected to the serial ports of PC. RST of COM can be connected to TXEN pin of PTR2000+ to switch its status of transmitting or receiving. So it realizes the function of wireless transmitting attendances information to a PC.

Man-machine interface and other hardware design

Man-machine interface includes keyboard, buzzer and LCD display system. The former is used for people to input users' ID or commands, the function of the second is to give users a hint and the last is used to display the information of date, time, user ID, error code, and status and system log. Real-time clock in the iris recognition management system is the benchmark of attending records. We use DS1302 trickle charge timekeeping chip containing an RTC by Dallas Semiconductor Corporation. It not only can satisfy the accuracy of the time, but also continues to work by battery when power is low. There is also a mass storage memory (EEPROM) AT24C512 in this system which is used to store the records of attendances. These records are made to be copies of attending info which are transmitted to PC by wireless module. The USB port gives the managers of the system a way to download these records in case when data packets are lost in the wireless transmission.

Software design

The software of wireless iris recognition attendance management system includes controlling software and

managing software installed in managing PC or workstation.

Controlling software design

Controlling software in the system is mainly divided into four categories: Iris verifying and identifying, managing iris of users, system setting and wireless communication managing. The simple flowchart of controlling software of the system is shown in Figure 5.

System initialization including keyboard, LCD, serial port and PTR2000+ initial program is arranged firstly. Then system enters the program loop waiting for key down message and serial port interrupt.

Attendances operations and system menu setting operations are carried out in keyboard processing program by the way of users or manager press keys to send keyboard interrupt message to system program. Operations of registering, deleting, modifying irises are in the system setting menu. Only manager has the right to enter system setting menu after verifying his/her iris recognition. System menu setting also includes time setting, bit rate of communication, styles of wireless communication and so on. All these programs are programming in C language.

Transmission protocol design

Uncertain outside factors may occur in wireless transmission such as electromagnetic interference, power and noise interference. So we must supply a wireless transmission protocol which can do error correcting and detecting effectively. First and foremost, is to identify noise and valid data. Often noise is raised with random bytes, so we can find some combinations of some fixed bytes to be the beginning of valid data packets.

After testing, we find that the combination of 0xFF, 0xFF and 0x00 has low frequency in noise and we make this combination as the beginning of data packets to be transmitted and received. A simple protocol is designed like this: [0xFF][0xFF][0x00][Packet Type][Data 0]... [Data n][Check Sum]. Packet type represents the data

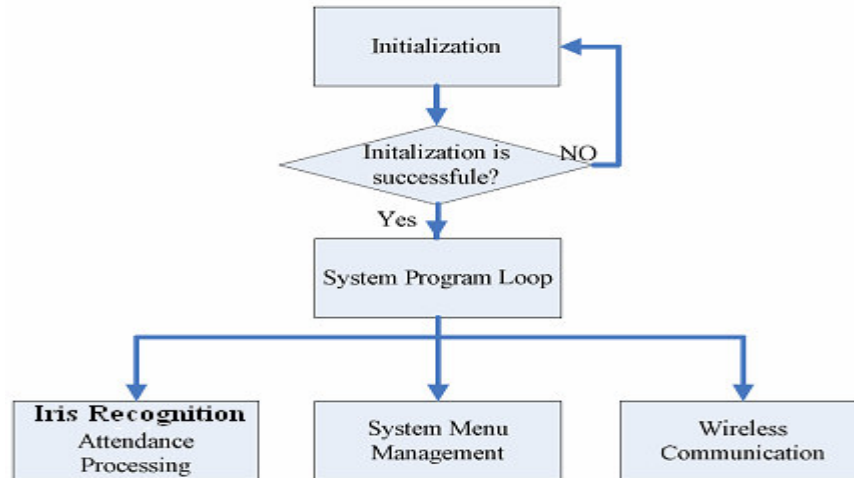


Figure 5. Flowchart of controlling software.

type of command or data. In this system, valid data transmitted by iris recognition attendance system include machine ID, users' ID, time of attending.

Design of management software on PC

Management software consists of communication interface DLL (Gong, 2004) and corresponding management setting program. Communication interface DLL charges the communication between wireless communication module and PC and management setting program is able to transmit data processing, information of stuff and shift managing, inquiry and print information of attendances.

DEBUGGING AND IMPLEMENTATION

In iris recognition verifying module debugging and implementation, we choose 300 irises as samples of iris recognition verifying testing. There are totally 1200 times of matching, and the verification rate is 98.3%, the rejection rate is 9.2%. In wireless transmission testing, we find that there is much noise in data transmission and the transmission distance cannot reach ideal distance. To solve these problems, we adopt some measures as follows:

- (1) Add filter circuit to power to reduce power interferences;
- (2) CPU and PTR2000+ have separate power supply and oscillator is set near CPU;
- (3) PCB divides into some partitions such as strong, weak signals zone, digital and analog zone;
- (4) In software, transmission uses short data packets and

adds delay time at interval time.

Results show that the phenomenon of data packets losing rarely occurs. Data transmission is steady and reliable and transmission distance satisfies system needs. Wireless transmission solves the shortcoming of this system and that there must be a managing PC nearby and it is difficult to lay the transmission lines where topography is bad. Attending people finish their attendances by pressing their iris recognition on sensor. This system can transmit users' attending records to managing PC in three modes: Immediate, timing and response. And it can be an intelligence terminal receiving information such as a meeting notice as well. To avoid the data packets lost, manager can check attendance records with the downloaded data copies via USB port. This system accomplishes these functions well. The characters of this system are that single system not only completes its functions but also same systems can form a network. Figure 6 shows that a network formed by four of such systems is implemented.

In such a network, PC receives data from each iris recognition attendance subsystem via wireless transmission channels and sends command to manage every subsystem uniformly. And they communicate with each other according to different machine ID of data packets.

CONCLUSIONS AND FUTURE WORK

This paper describes a techniques used in a iris recognition verifying system and wireless transmission as well as an implement of such a system by means of a wireless iris recognition attendance management system. This system possess the functions of iris recognition

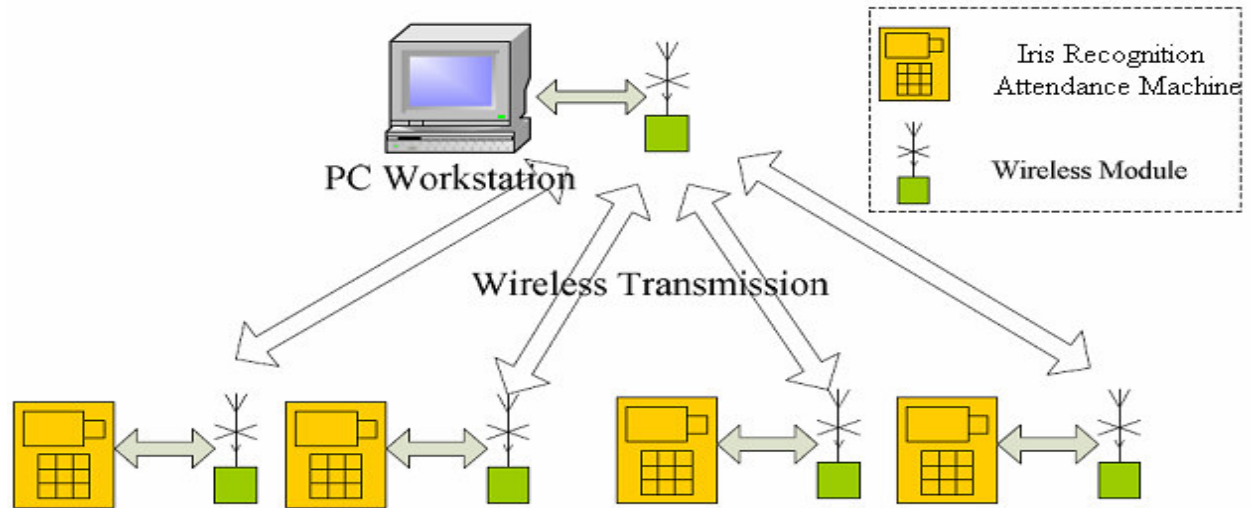


Figure 6. A network formed by four such systems.

verifying, checking on attendances independently, and wireless communication and so on. The performance of this system meets the needs of daily attendance management in various enterprises and institutions. It has good market prospects.

While the rapid development of chip and computer technologies, many new methods should be used in such system e.g. RFID technology and other biometrics technologies like retinal verifying to enhance the reliability of recognition and adopt new wireless technologies like GPRS to solve the problem of the bad quality transmission channel and so on.

REFERENCES

- Belganoui Y, Guézel JC, Mahé T (2000). « La biométrie, sésame absolu ... », Industries et Techniques, France no. 817.
- Daugman J (1993). High confidence visual recognition of persons by a test of statistical independence. *IEEE Trans. Pattern Analy. Machine Intell.* 15(1993): 1148-1161.
- Daugman J (1994). "Biometric Personal Identification System Based on Iris Analysis". U.S. Patent. 5: 291-560.
- Daugman J (2003). The importance of being random: Statistical principles of iris recognition, *Pattern Recognition* 36(2): 279-291.
- Gifford MM, McCartney DJ, Seal CH (1999). « Networked biometrics systems: requirements based on iris recognition », *BT Technol. J.* pp. 17(2).
- Gong J (2004). Visual C++ / Turbo C serial port communication programming and implementation, Electronics Industry, Beijing.
- Harper S (2003). A SECURE ADAPTIVE NETWORK PROCESSOR, PhD thesis in Virginia Polytechnic Institute and State University.
- Kumar B, Xie C, Thornton J (2003). Iris verification using correlation filters. *Proc. 4th Int. Conf. Audio- and Video-based Biometric Person Authentication* pp. 697-705.
- Medien B, Burghardt T (2002). Report on Identity Verification, University of Bristol.
- Miyazawa K, Ito K, Aoki T, Kobayashi K, Nakajima H (2006). A Phase-Based Iris Recognition Algorithm. *ICB 2006, LNCS 3832*, ppSpringer-Verlag Berlin Heidelberg 356: 365-2005.
- PTR (2000). Web site, <http://www.xuntong.com> SecuGen Corporation, SecuGen FDA01 Developer's Guide, DC1-0001B Rev A, SecuGen Corporation, Milpitas, CA.
- Weisman GJ (2003). *The Essential Guide to RF and Wireless*, Prentice Hall.
- Wolf E (1976). *Anatomy of the Eye and Orbit*, 7th Edition, H. K. Lewis Co. LTD.
- Zhang D, Jain AK (2004). Biometric Authentication, First International Conference, ICBA 2004, Hong Kong, China, Proceedings Series: Lecture Notes in Computer Science, Vol. 3072 Zhang, David; Jain, Anil K. (Eds.) 2004, XVII, p. 800.